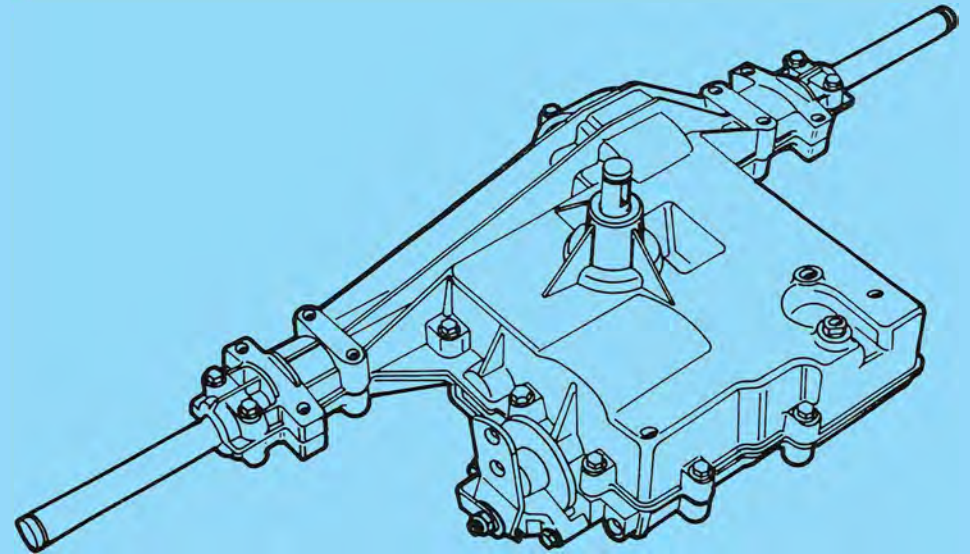
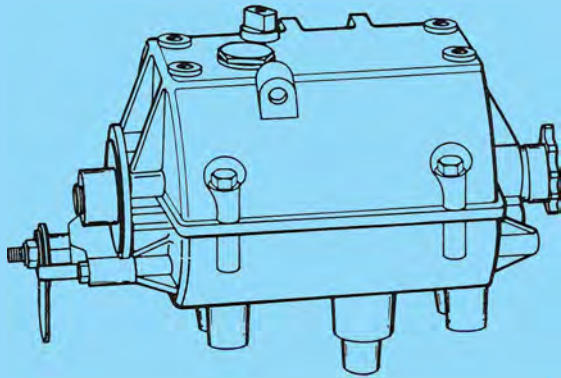


# PEERLESS MOTION DRIVE SYSTEMS

## TRANSMISSION AND TRANSAXLE QUICK REFERENCE ASSEMBLY GUIDE



# **PEERLESS<sup>®</sup> GEAR**

**Your Transmission Solution**

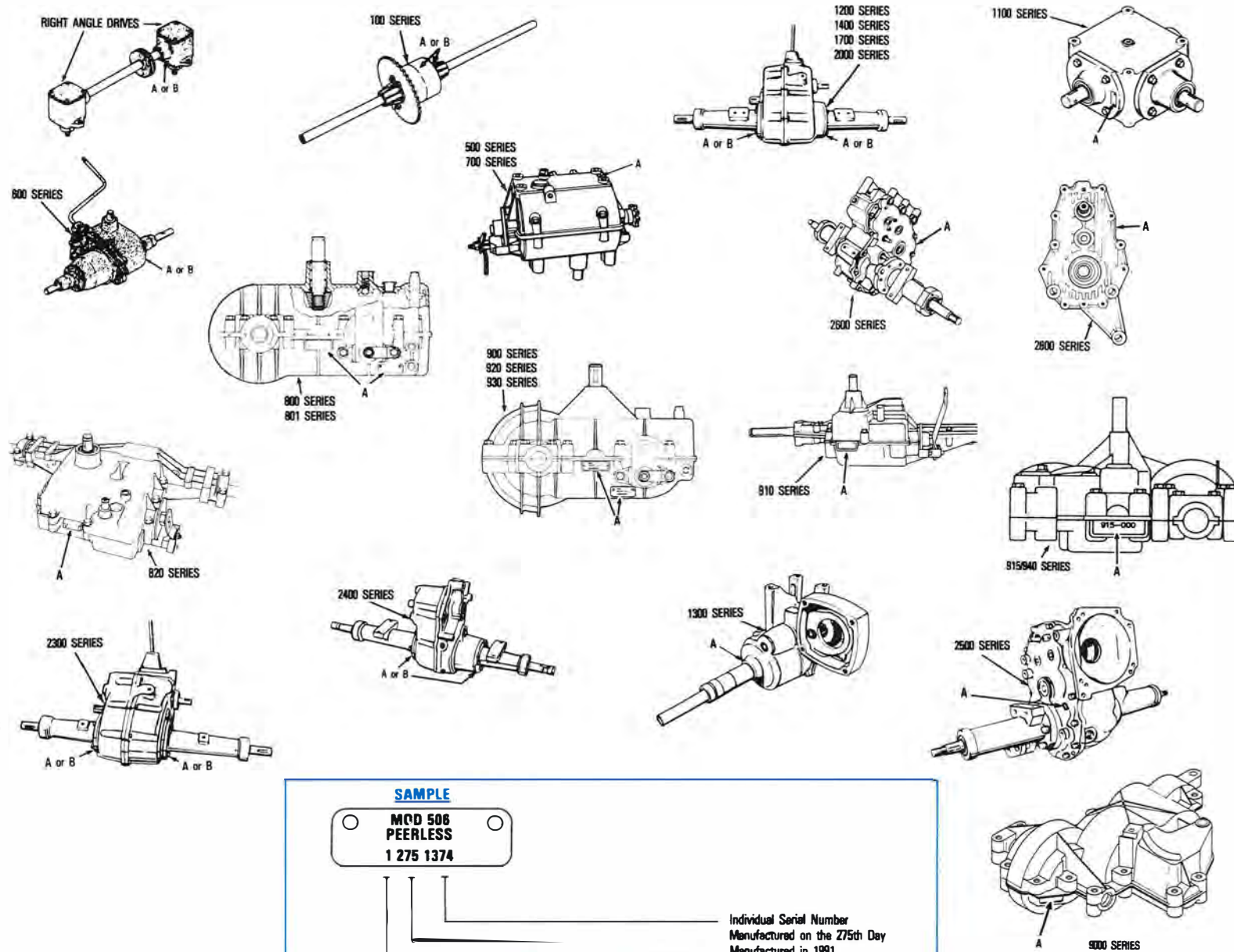
Made in the USA Since 1945

1555 SOUTH JACKSON STREET  
SALEM, INDIANA 47167

# INDEX

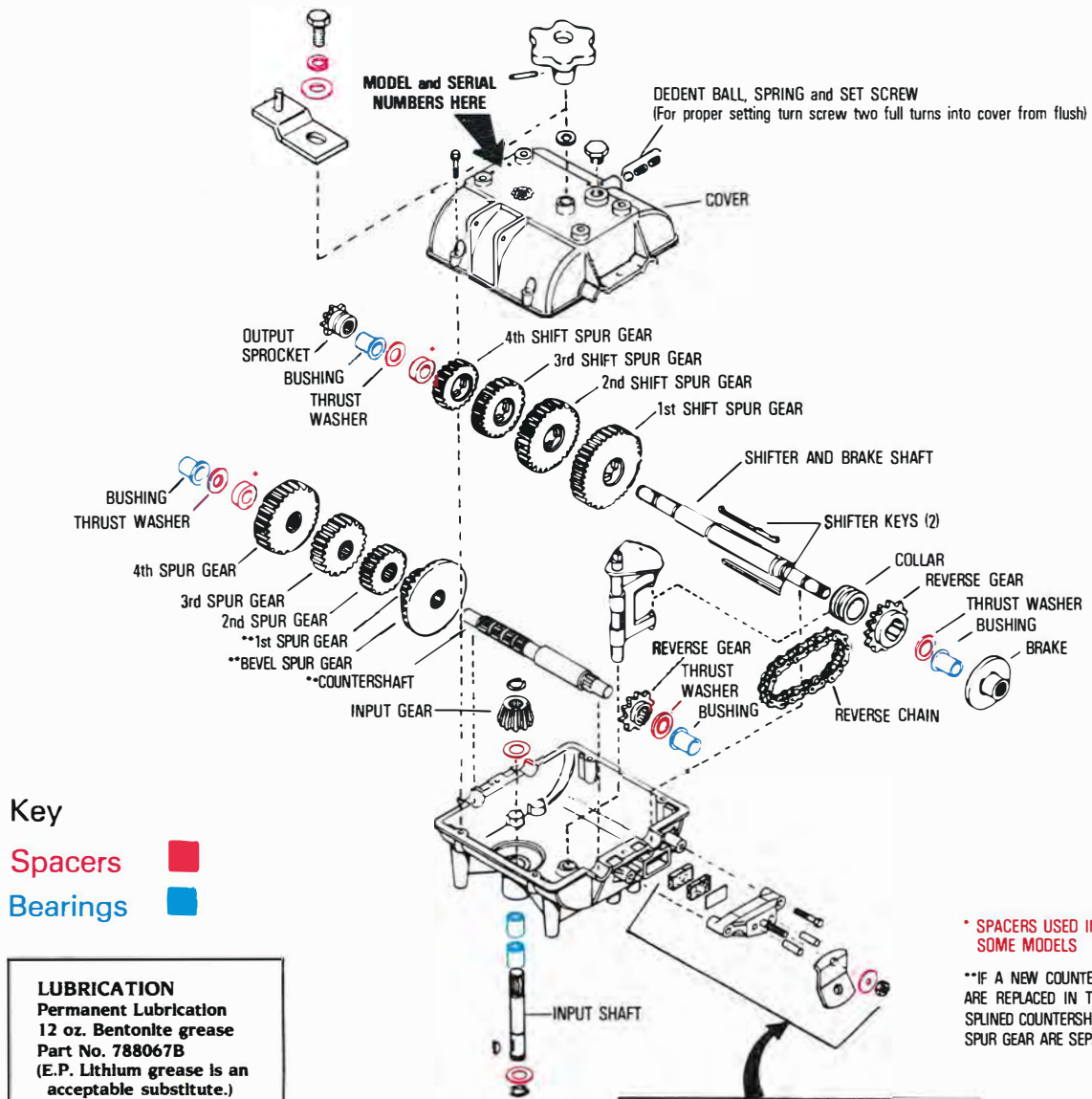
UNIT IDENTIFICATION	2
500 SERIES TRANSMISSION	3
600 SERIES TRANSAXLE	4
700 SERIES TRANSMISSION	5
700H SERIES TRANSMISSION	6
800 SERIES TRANSAXLE	7
820 SERIES TRANSAXLE	8
900 SERIES TRANSAXLE	9
910 SERIES TRANSAXLE	10
915 SERIES TRANSAXLE	11
920 SERIES TRANSAXLE	12
930 SERIES TRANSAXLE	13
9000 SERIES TRANSAXLE	14
1100 SERIES RIGHT ANGLE "T" DRIVE	15
1300 SERIES TRANSAXLE	16
2300 SERIES TRANSAXLE	17
2400 SERIES TRANSAXLE	18
2500 SERIES TRANSAXLE	19
2600 SERIES TRANSAXLE (SINGLE SPEED)	20
2600 SERIES TRANSAXLE (2 SPEED W/LOCK DIFFERENTIAL)	21
2800 SERIES TRANSMISSION (PTO)	22

# IDENTIFICATION



# 500 SERIES TRANSMISSION

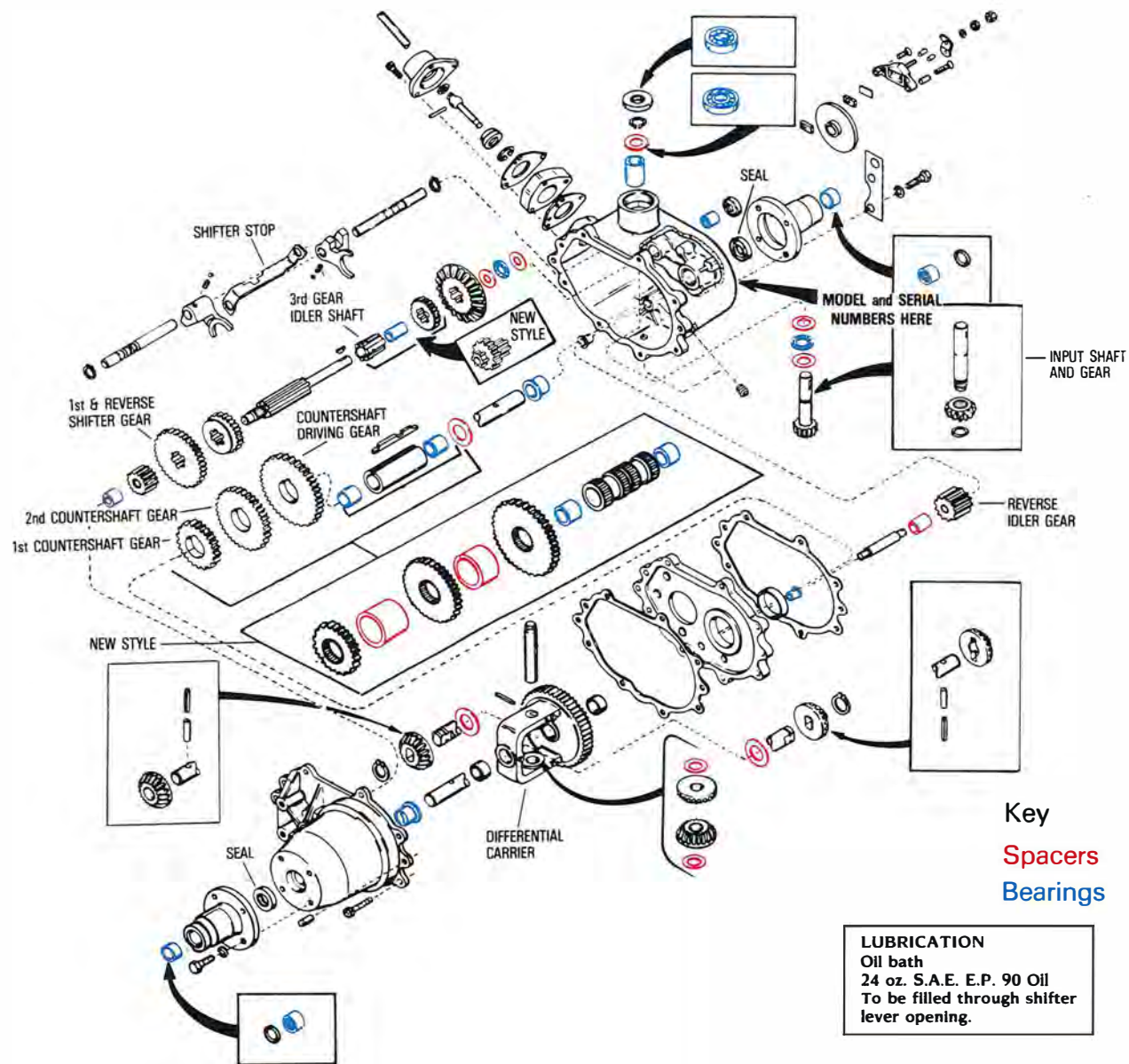
5  
0  
0  
S  
E  
R  
I  
E  
S



**NOTE:** These models can be built with brakes and sprockets either on right or left side.

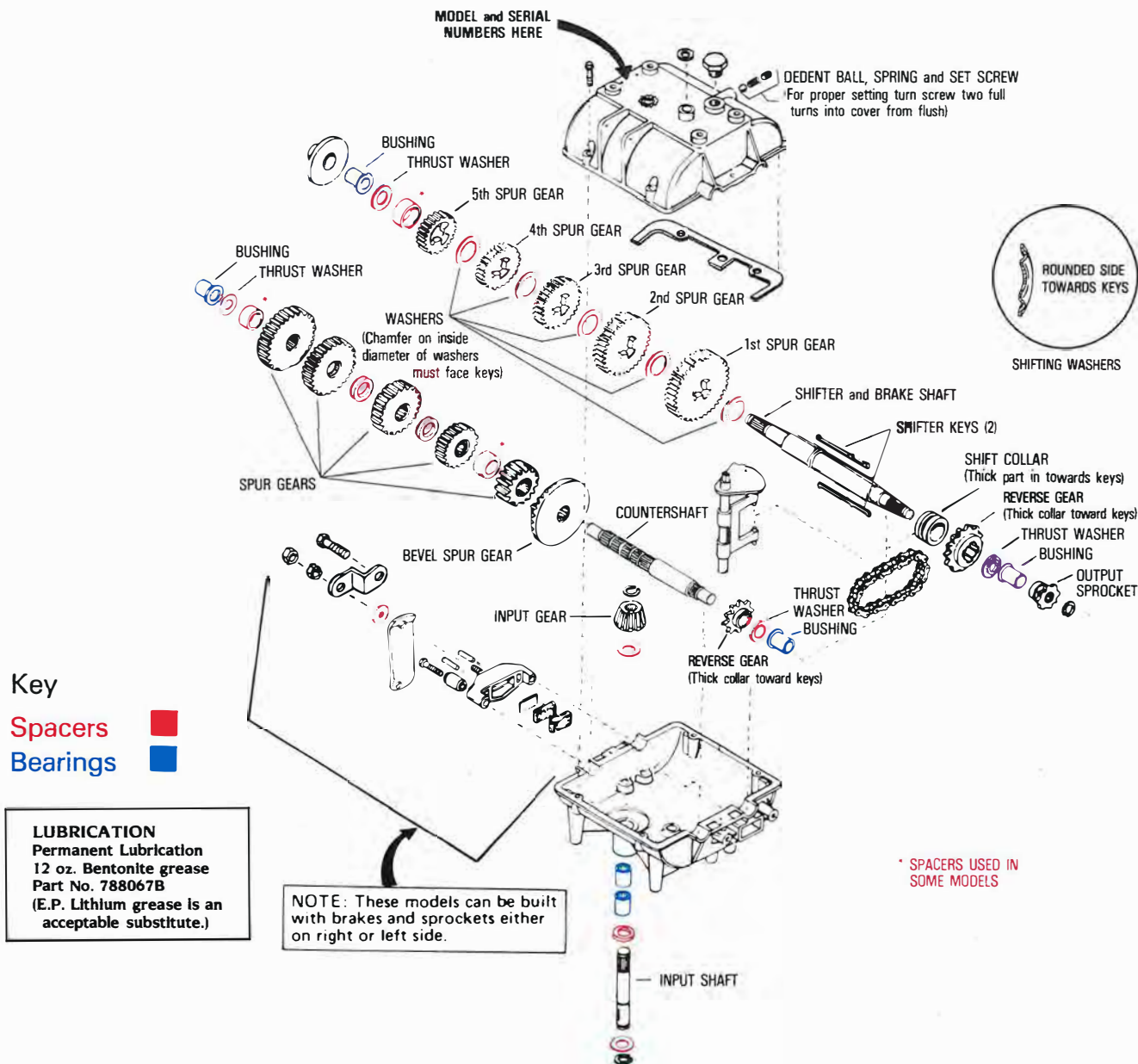


# 600 SERIES TRANSAXLE

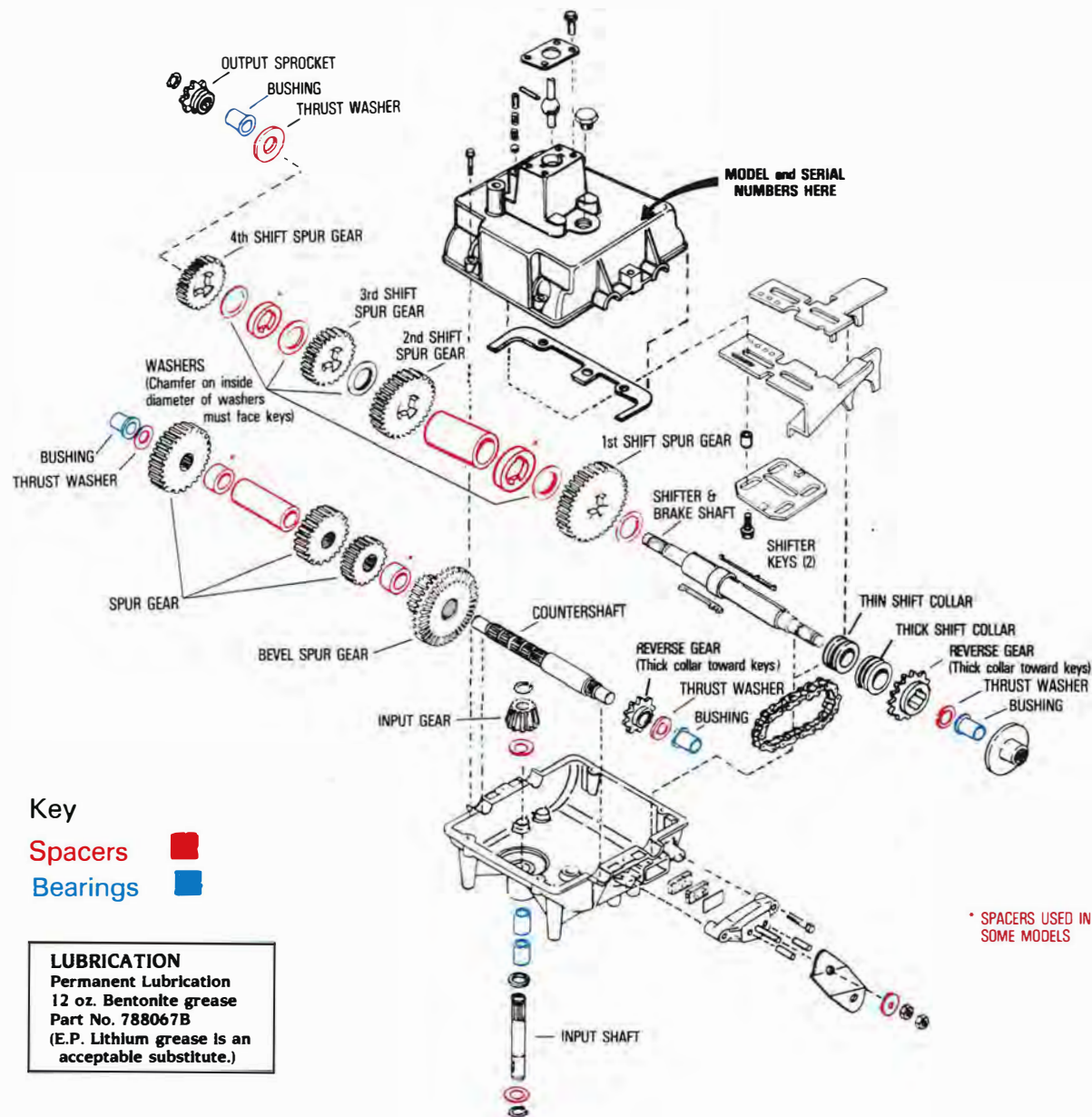


600 SERIES

# 700 SERIES TRANSMISSION



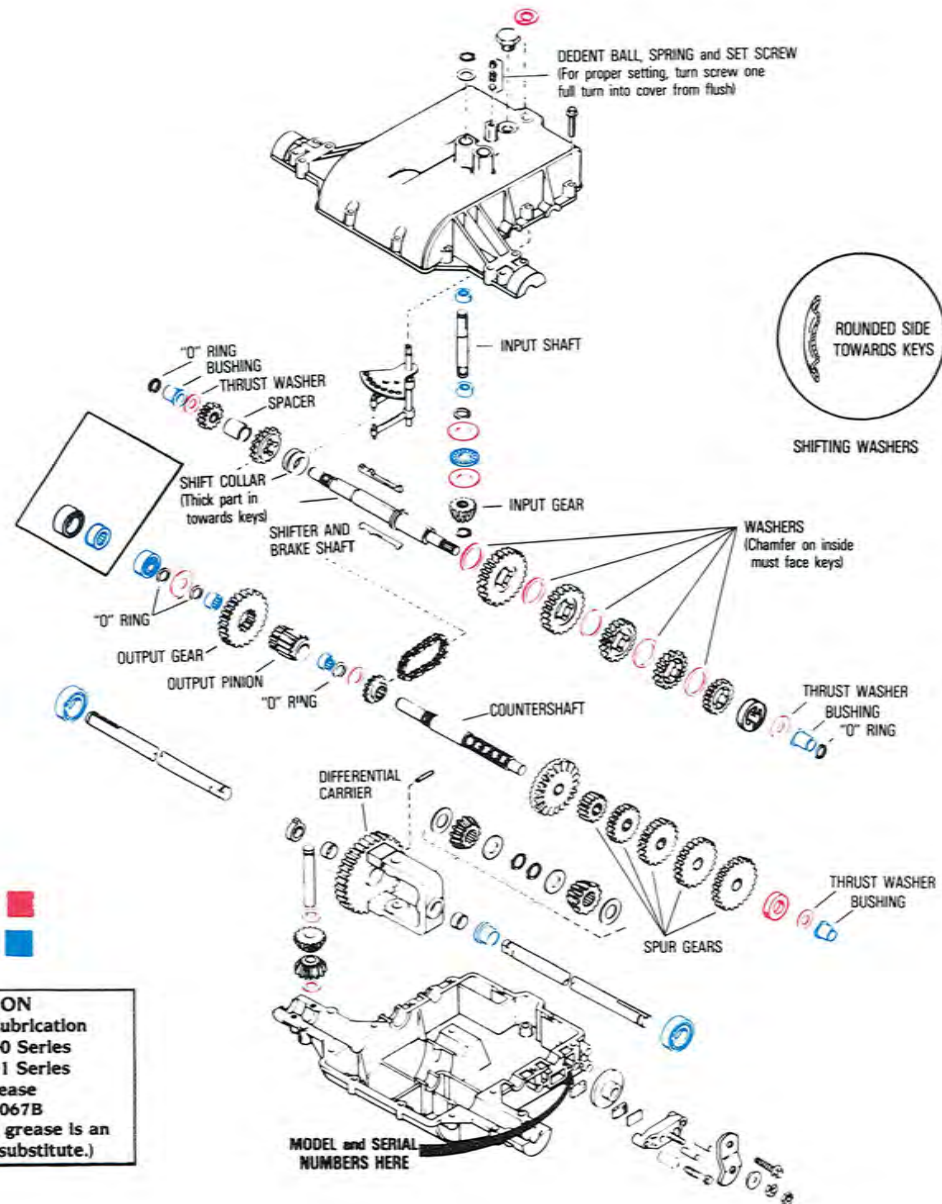
# 700H SERIES TRANSMISSION



700H SERIES

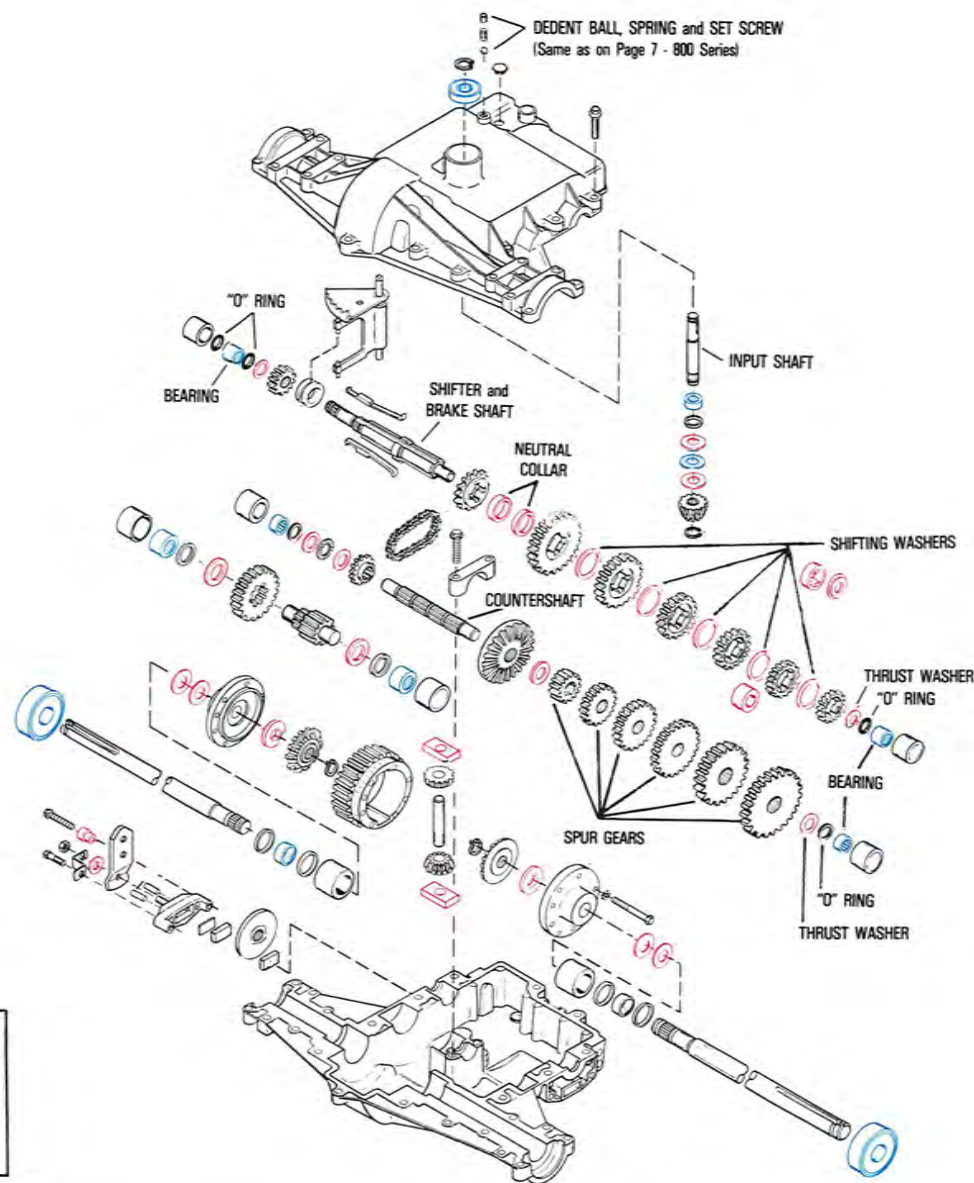


# 800 SERIES TRANSAXLE





# 820 SERIES TRANSAXLE



Key

Spacers

Bearings

**LUBRICATION**  
Permanent Lubrication  
36 oz. of Bentonite grease  
Part No. 788067B  
(No acceptable substitute)



SHIFTING WASHERS

8  
2  
0  
  
S  
E  
R  
I  
E  
S

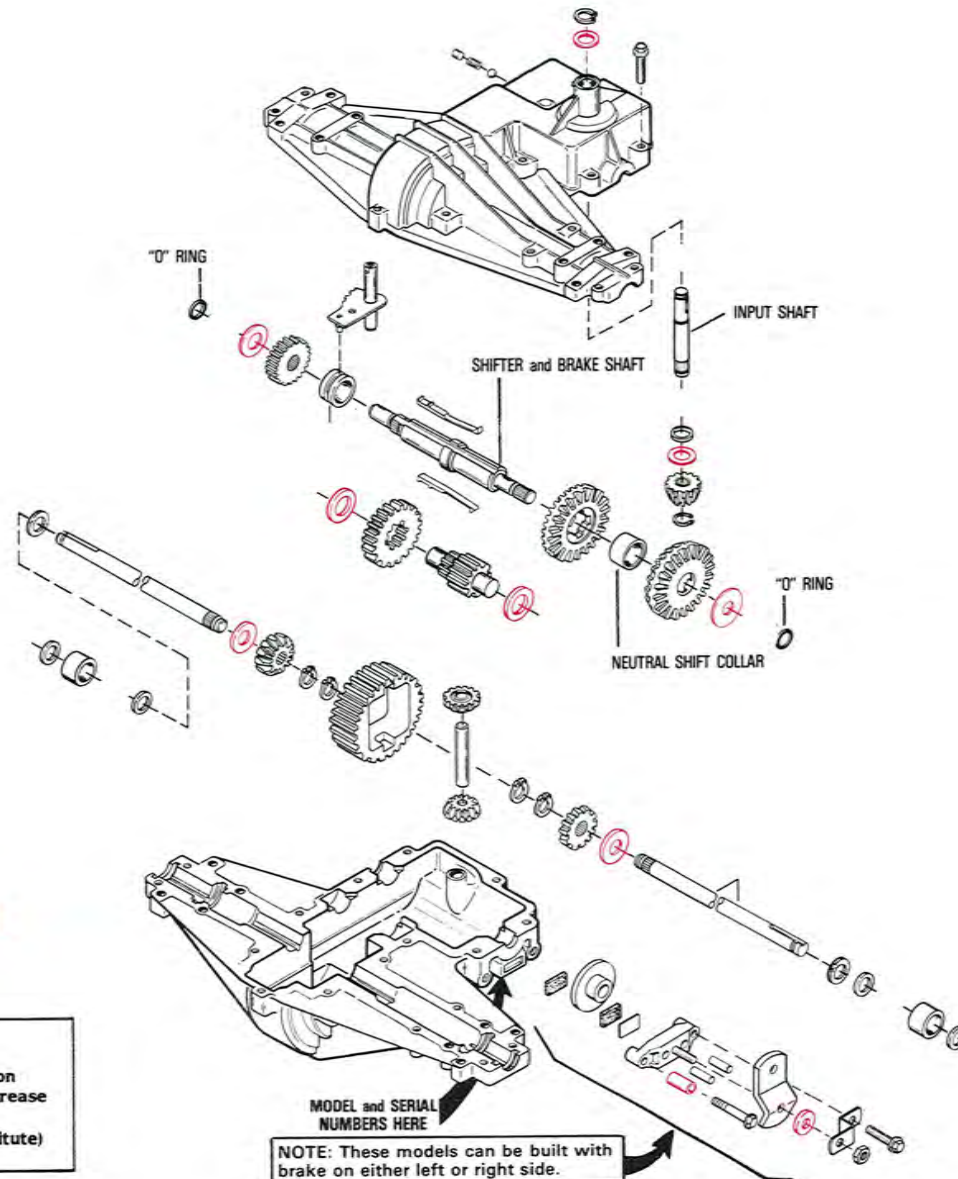
**900 SERIES**



9

# 910 SERIES TRANSAXLE

9  
1  
0  
  
S  
E  
R  
I  
E  
S



Key

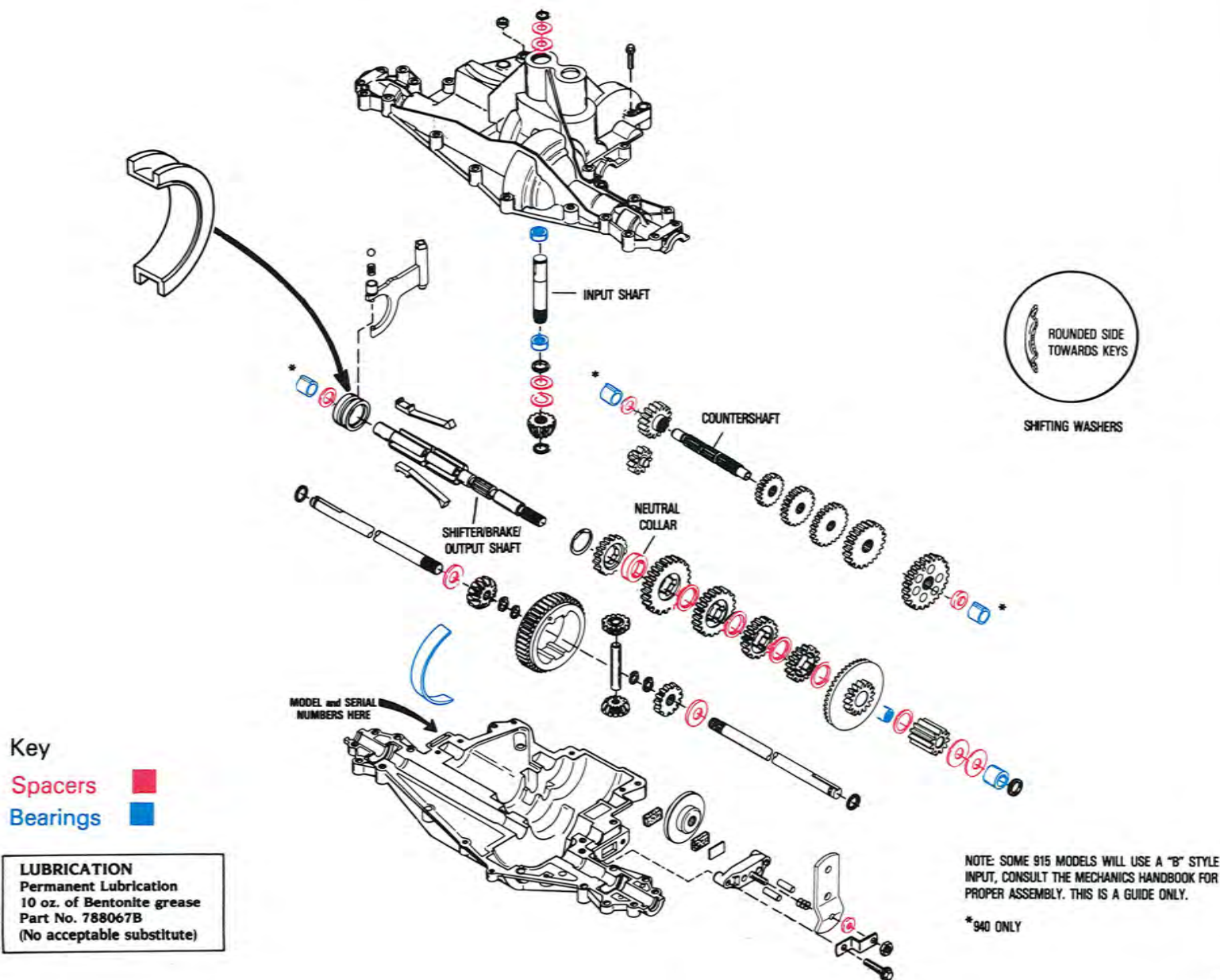
Spacers



**LUBRICATION**  
Permanent Lubrication  
18 oz. of Bentonite grease  
Part No. 788067B  
(No acceptable substitute)

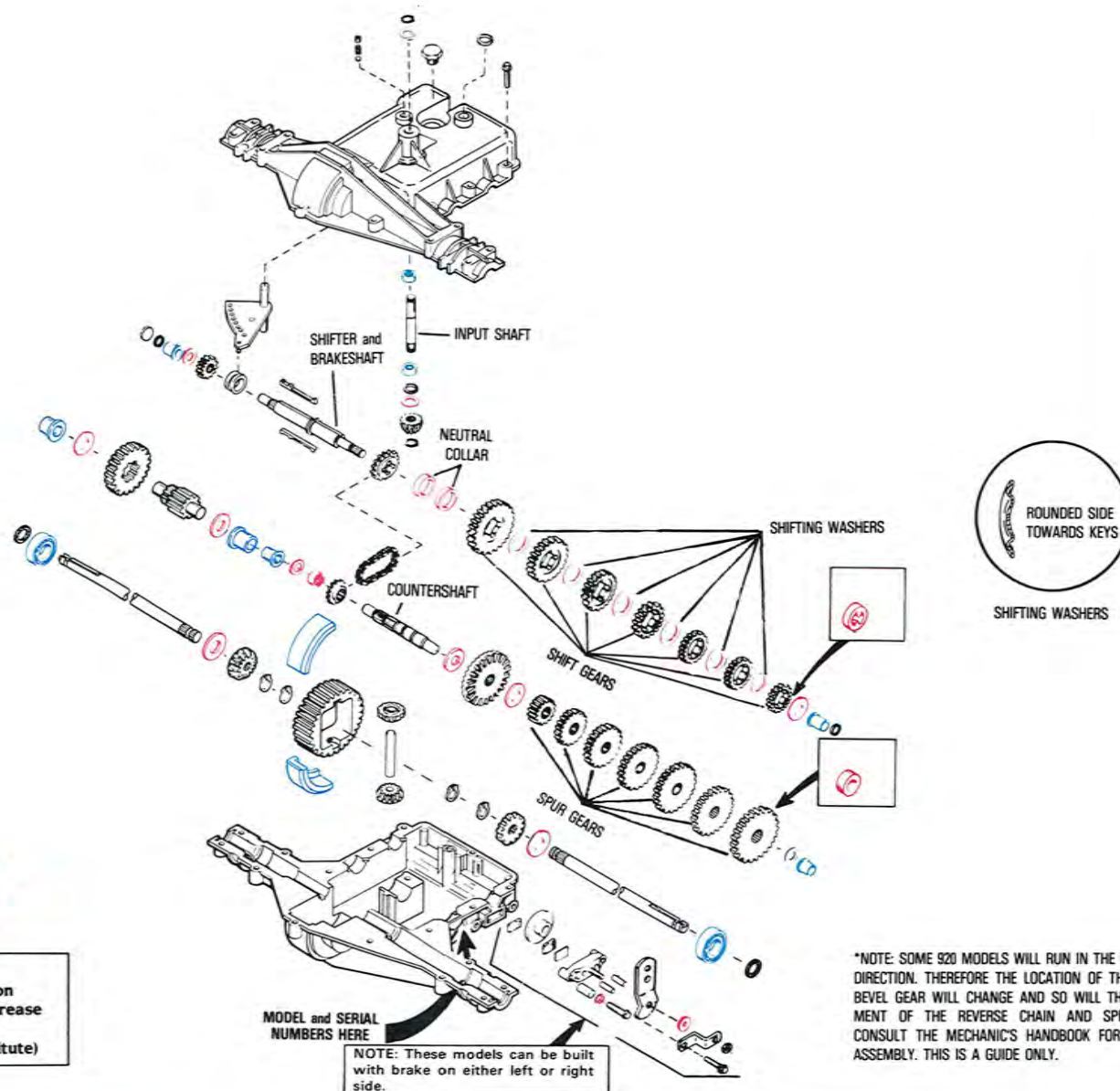


# 915/940 SERIES TRANSAXLE



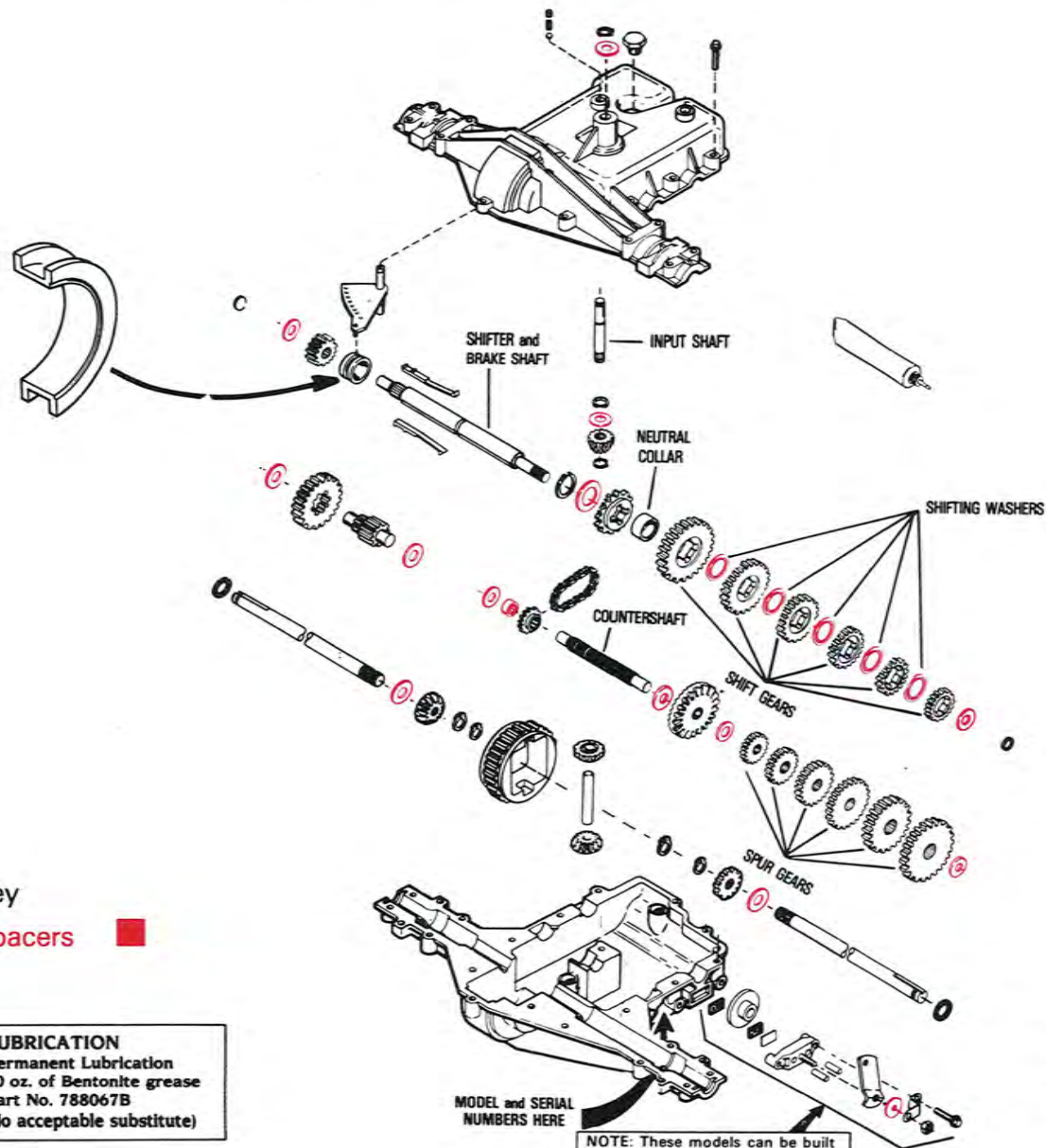


# 920 SERIES TRANSAXLE



9  
2  
0  
  
S  
E  
R  
I  
E  
S

# 930 SERIES TRANSAXLE

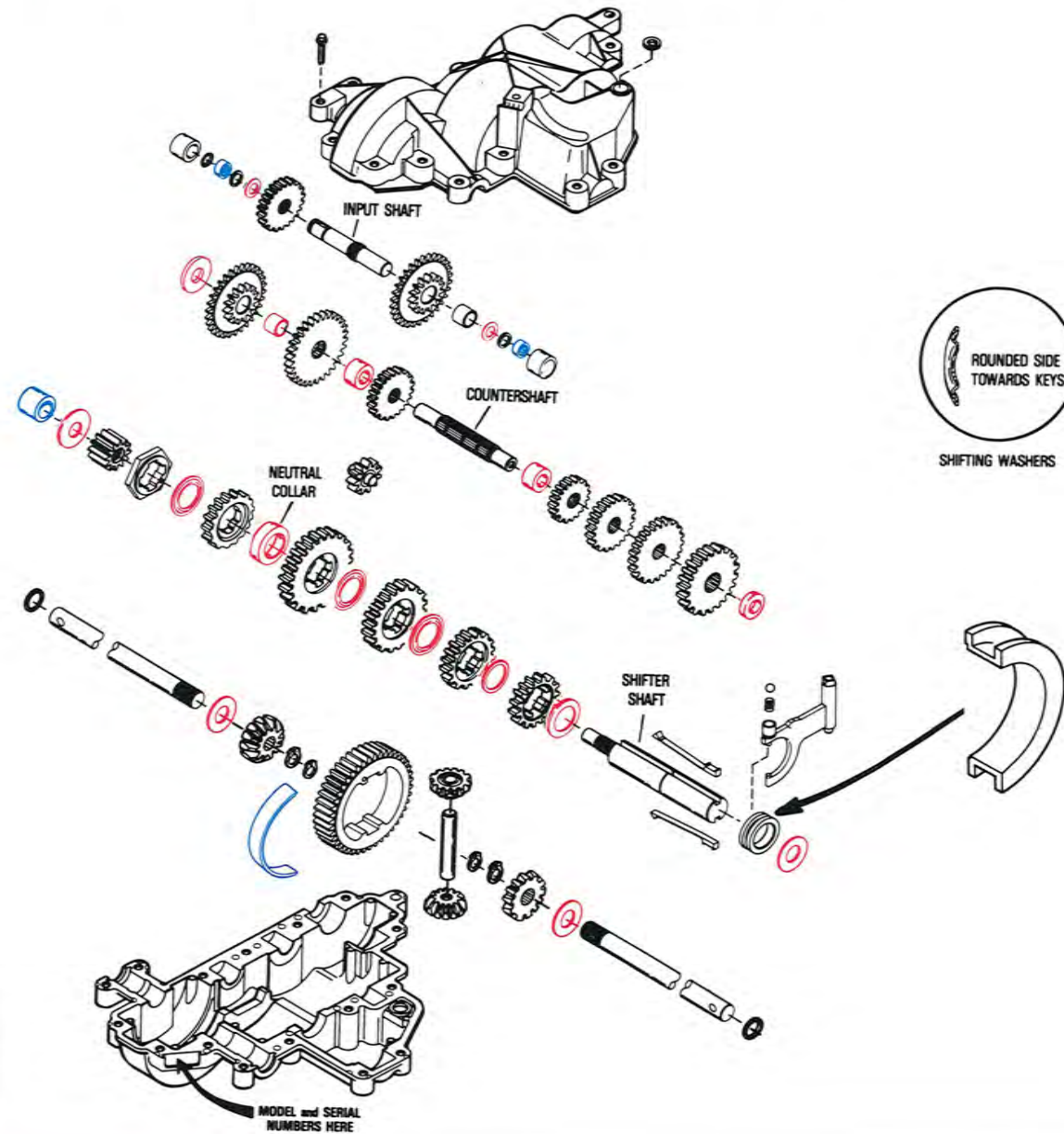


Key  
 Spacers ■

**LUBRICATION**  
 Permanent Lubrication  
 30 oz. of Bentonite grease  
 Part No. 788067B  
 (No acceptable substitute)

\*NOTE: SOME 930 MODELS WILL RUN IN THE OPPOSITE DIRECTION. THEREFORE THE LOCATION OF THE LARGE BEVEL GEAR WILL CHANGE AND SO WILL THE PLACEMENT OF THE REVERSE CHAIN AND SPROCKETS. CONSULT THE MECHANIC'S HANDBOOK FOR PROPER ASSEMBLY. THIS IS A GUIDE ONLY.

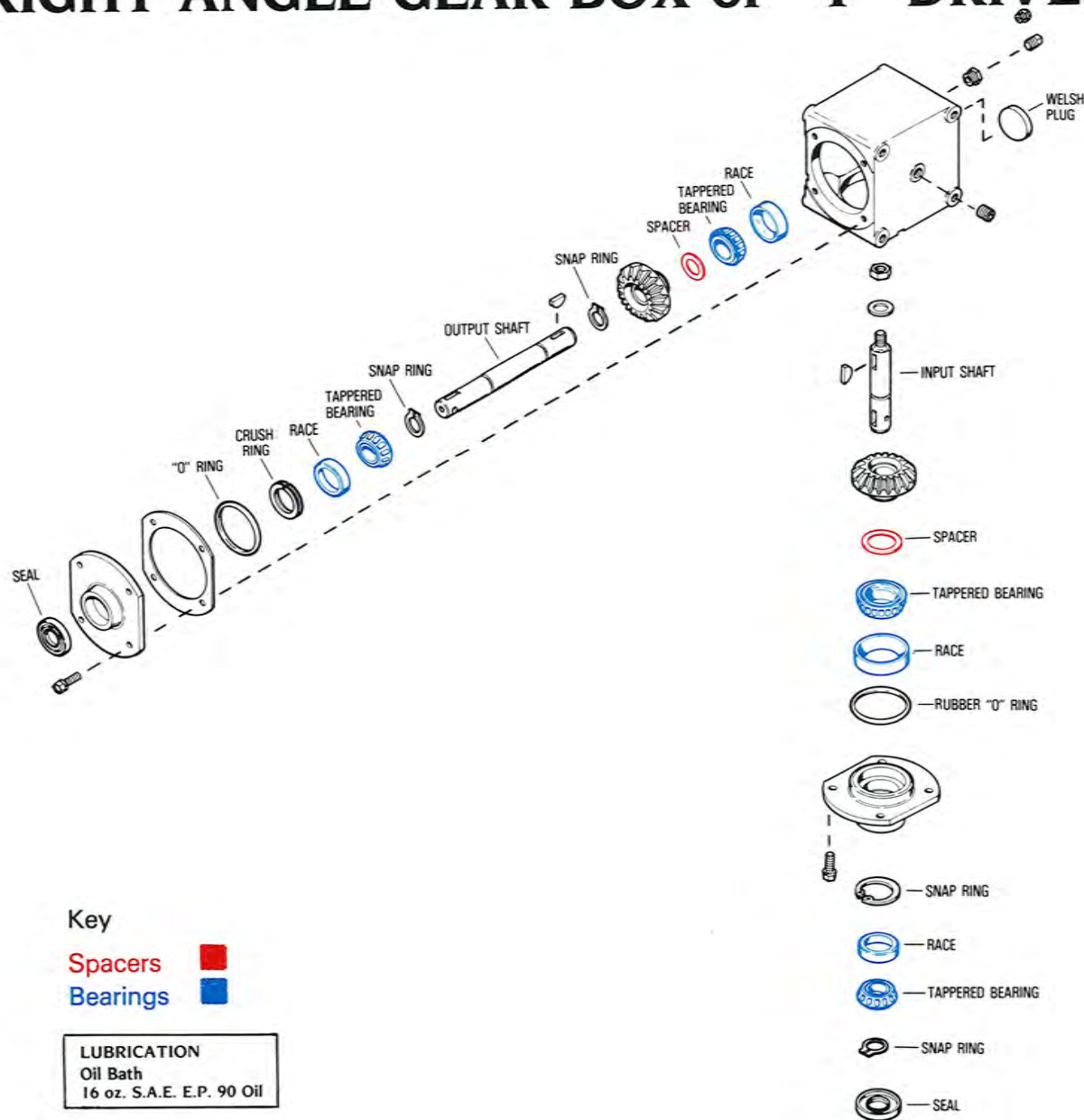
# 9000 SERIES TRANSAXLE



9  
0  
0  
0  
S  
E  
R  
I  
E  
S



# 1100 SERIES RIGHT ANGLE GEAR BOX or "T" DRIVE

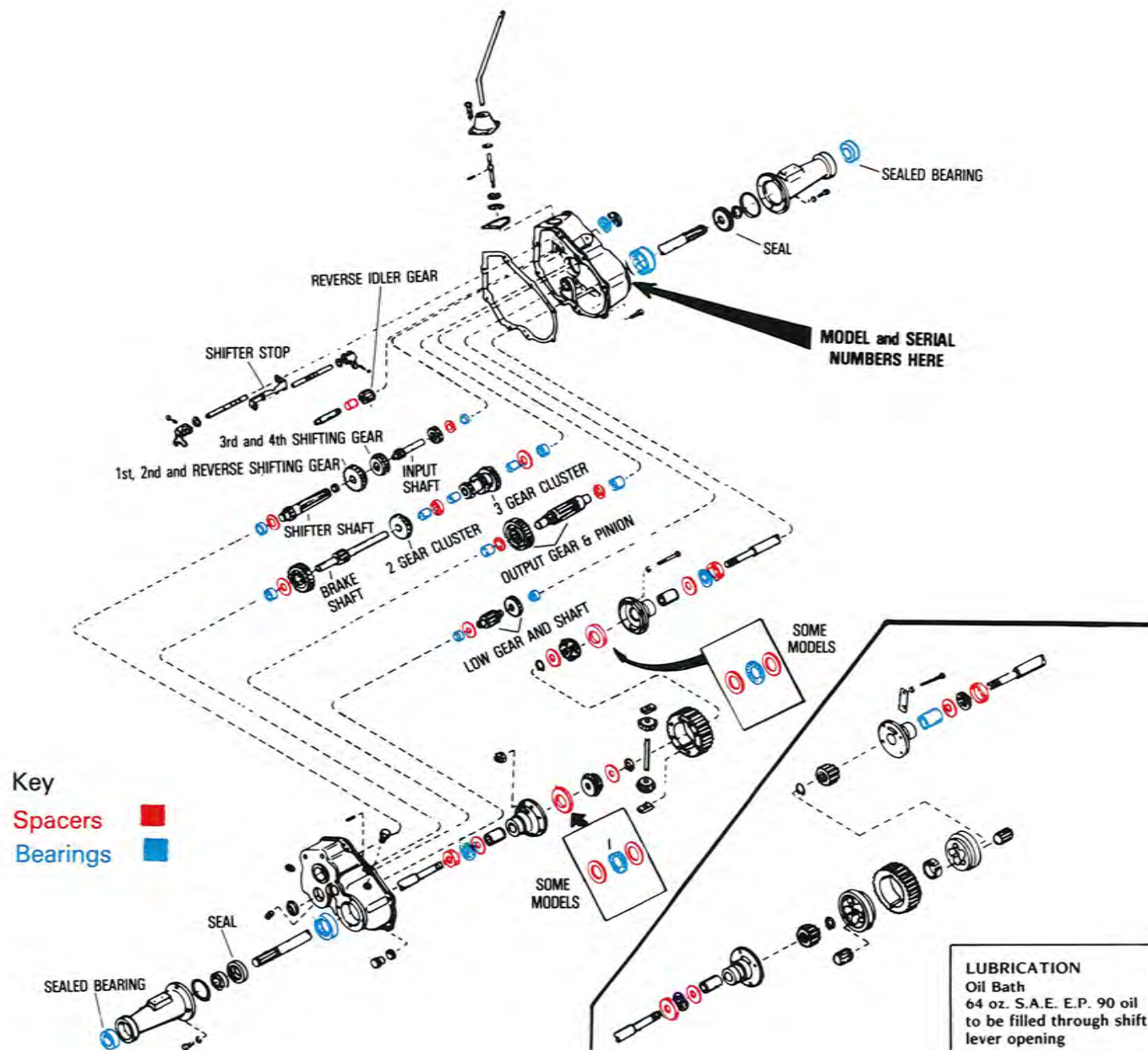




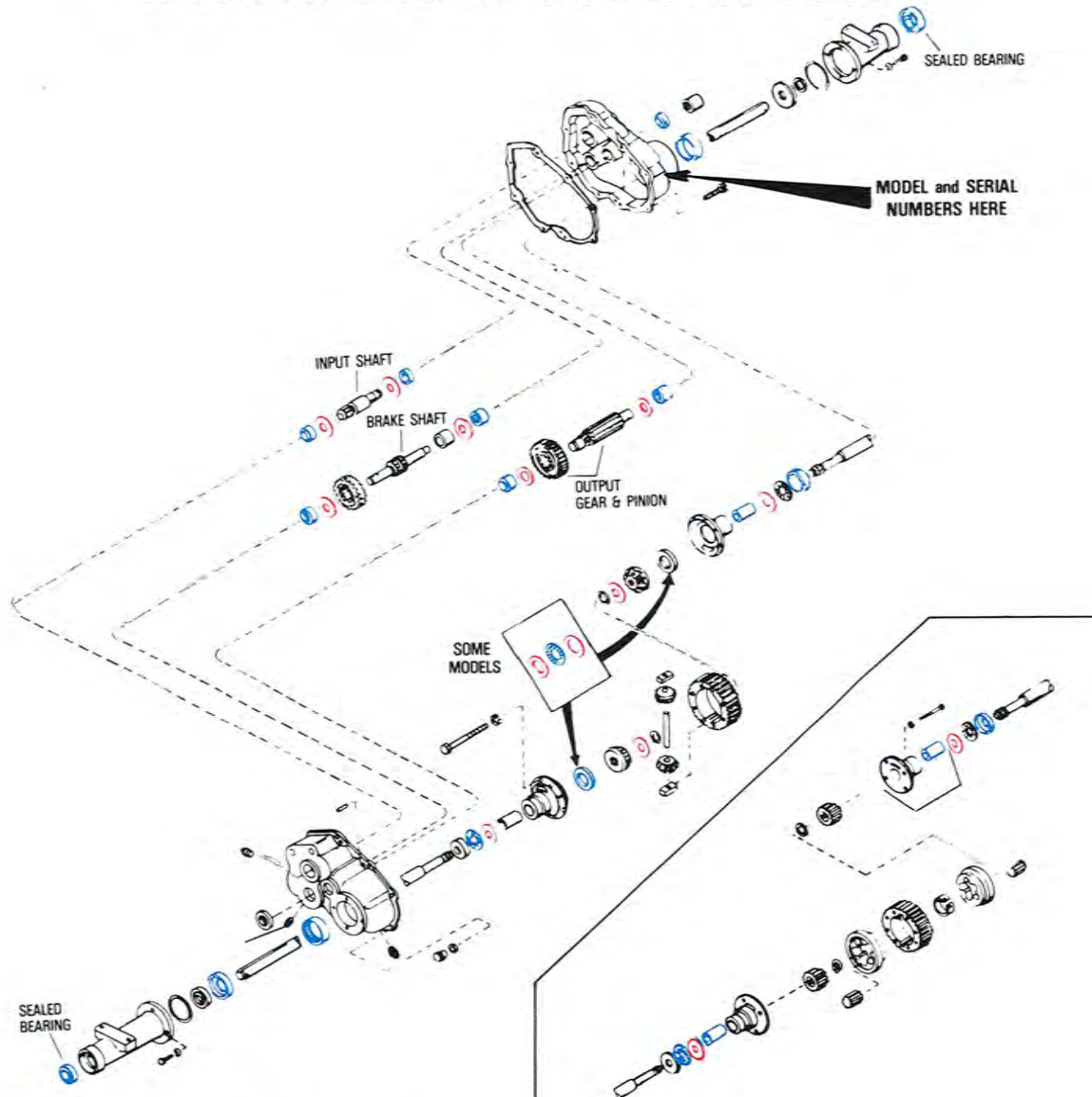
## 1300 SERIES



## 2300 SERIES TRANSAXLE



# 2400 SERIES TRANSAXLE



LUBRICATION  
Oil Bath  
32 oz. S.A.E. E.P.

Key

Spacers ■  
Bearings ■

2  
4  
0  
0  
S  
E  
R  
I  
E  
S

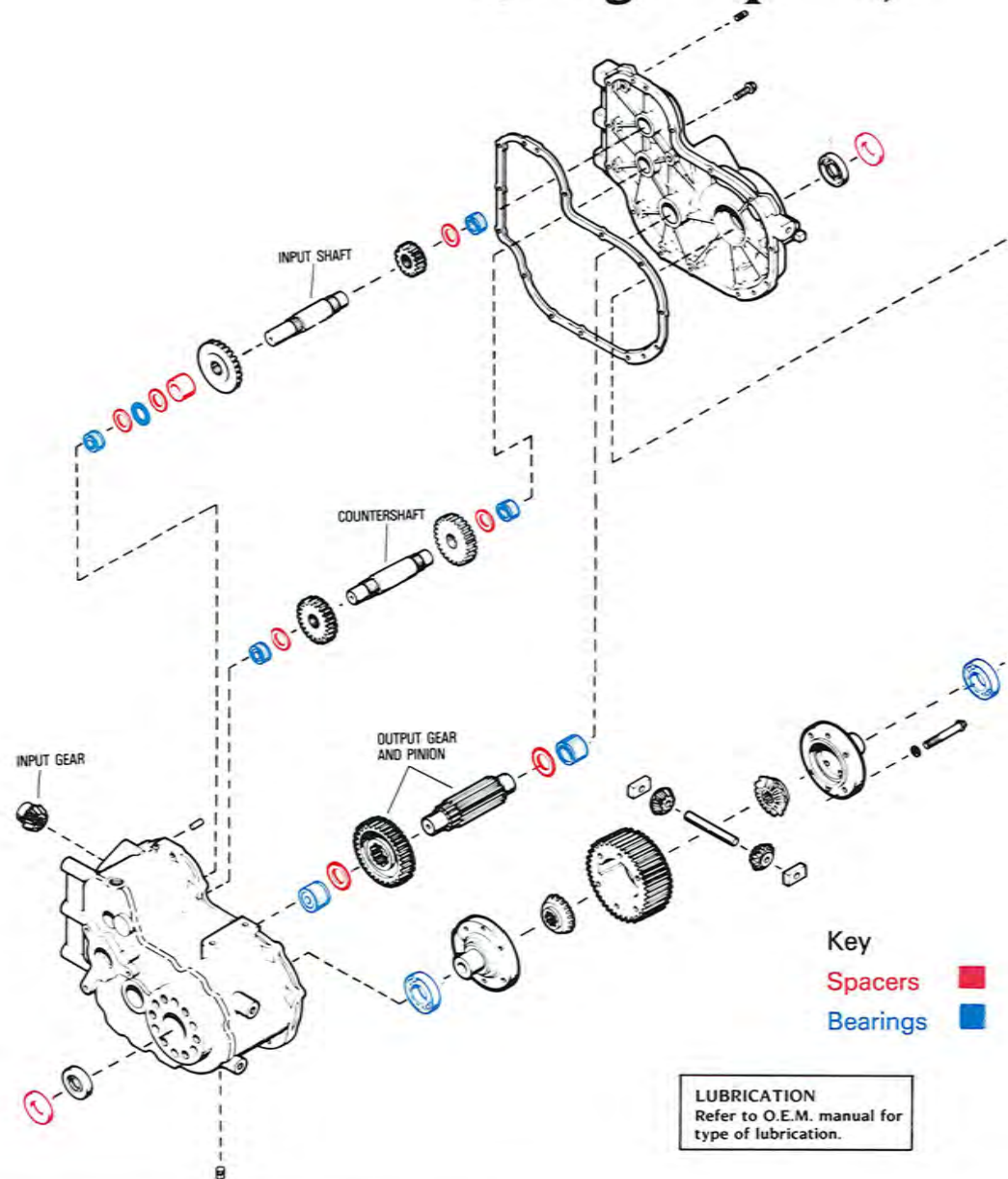


**2500 SERIES**



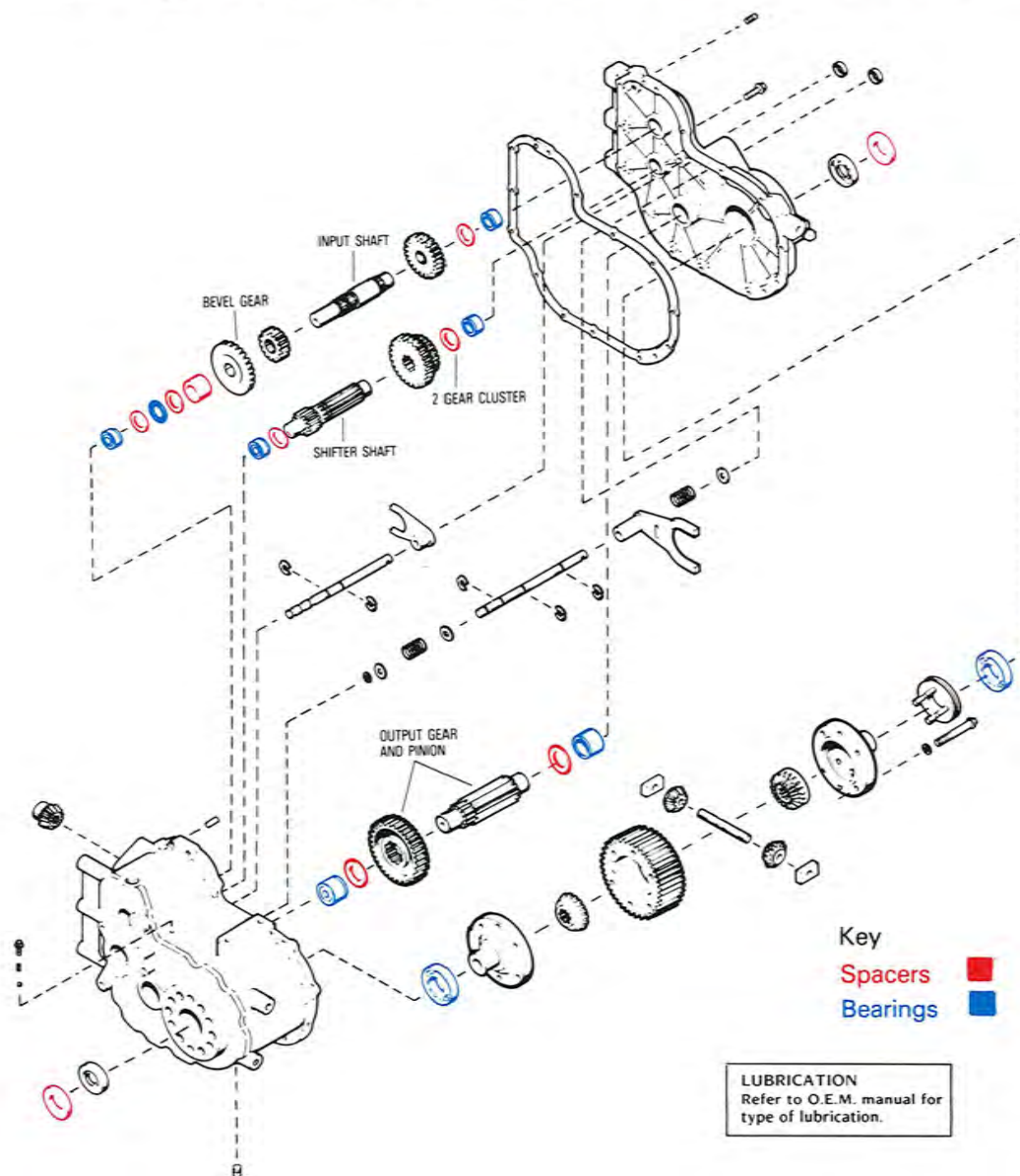


# 2600 SERIES TRANSAXLE (Single Speed)

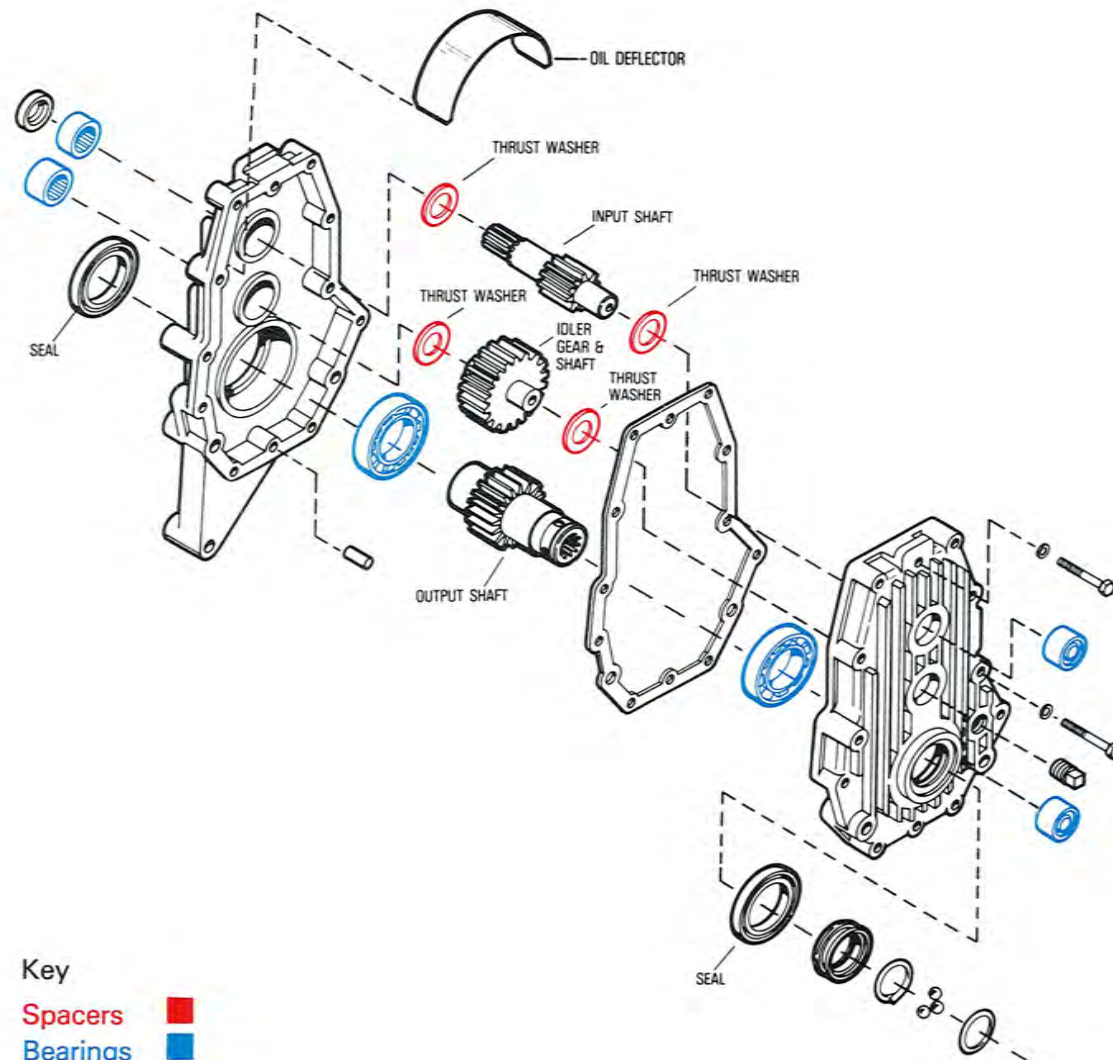


2600 SERIES

## 2600 SERIES TRANSAXLE (2-Speed with Lock Differential)



# 2800 SERIES TRANSMISSION (PTO)



Key

Spacers

Bearings

LUBRICATION  
Refer to O.E.M. manual for  
type of lubrication.

2  
8  
0  
0  
S  
E  
R  
I  
E  
S

