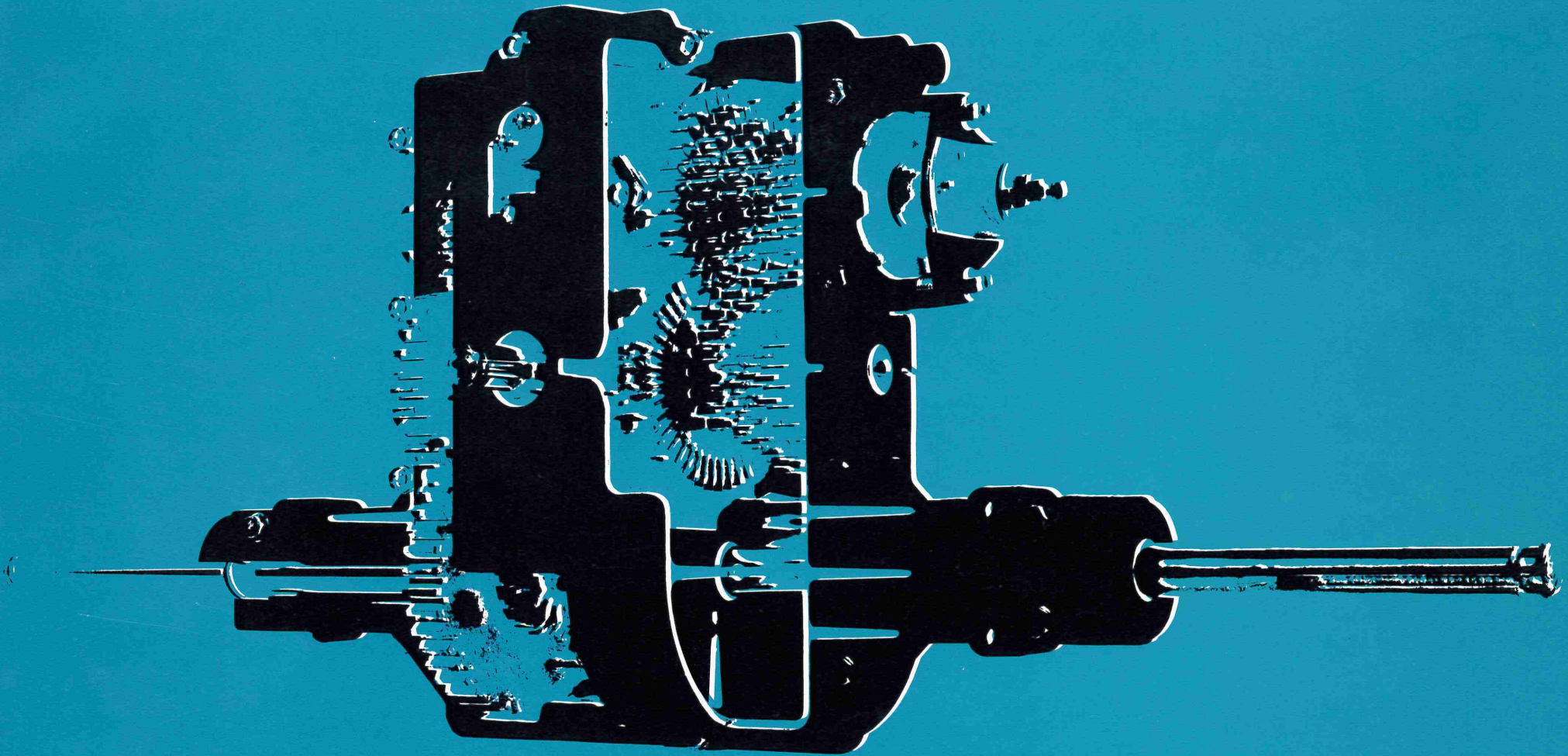
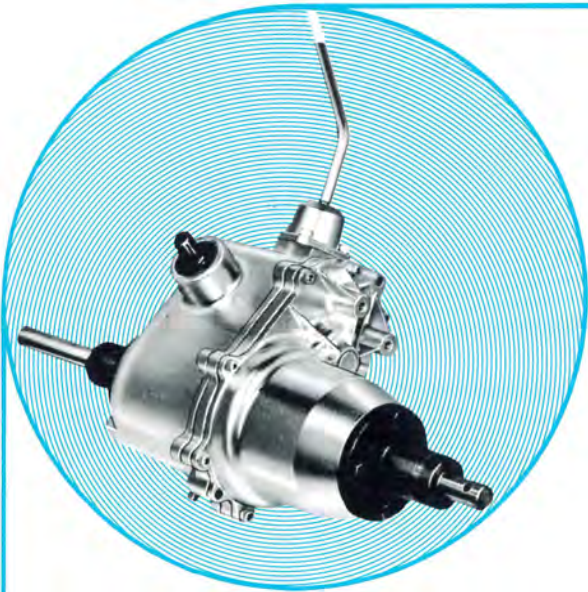


PEERLESS GEAR



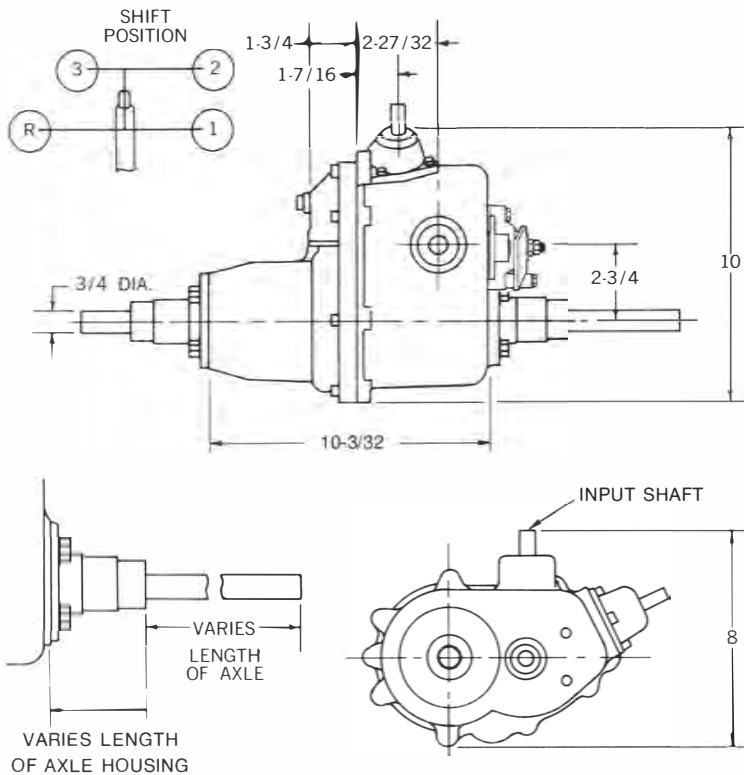
A DIVISION OF TECUMSEH PRODUCTS COMPANY



PEERLESS SERIES 600* TRANSAXLES

3 SPEEDS FORWARD — 1 REVERSE
FOR • RIDING MOWERS
• COMPACT TRACTORS
APPROXIMATE WEIGHT 30 POUNDS

dimensional data



applications

VERTICAL ENGINE RIDING MOWER — The input shaft of the TransAxle is in the same plane as the output shaft of the engine, making belt and drive arrangements simpler.

RIDING MOWER — The 600 permits a relatively short power train for rear mounted engines.

specifications

Axle Torques

150 Ft. Lbs.

Maximum Weight On Transaxle

Determined by method of mounting.
450 Lbs. Maximum.

Speeds

3 forward, 1 reverse.

Type of Shift

Selective-speed, as on farm tractors.
Shift lever configuration to customer specifications.

Gear Ratios

1st gear — 26.6:1	3rd gear — 9.1:1
2nd gear — 13.6:1	Rev. gear — 19.5:1

Axles

3/4" diameter only with 3/16 x 7/8 Woodruff Key;
or to customer specification.

Distance Between Drive Wheels

To customer specification.

Size of Input

5/8" Diameter, with 3/8 x 5/8 Woodruff Key.

Input Speed

1900 RPM Maximum.

Type of Drive

Pulley and belt; or with coupling for direct drive.

Mounting

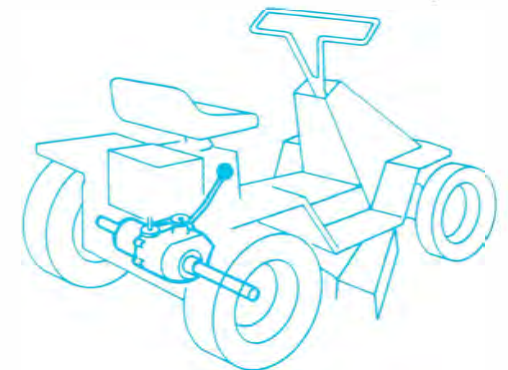
3-point mounting (2 on axle housing and 1 on side of Transaxle).

Shift Lever

Protrudes from forward side of Transaxle: shape to customer specification.
Maximum tire diameter 18".

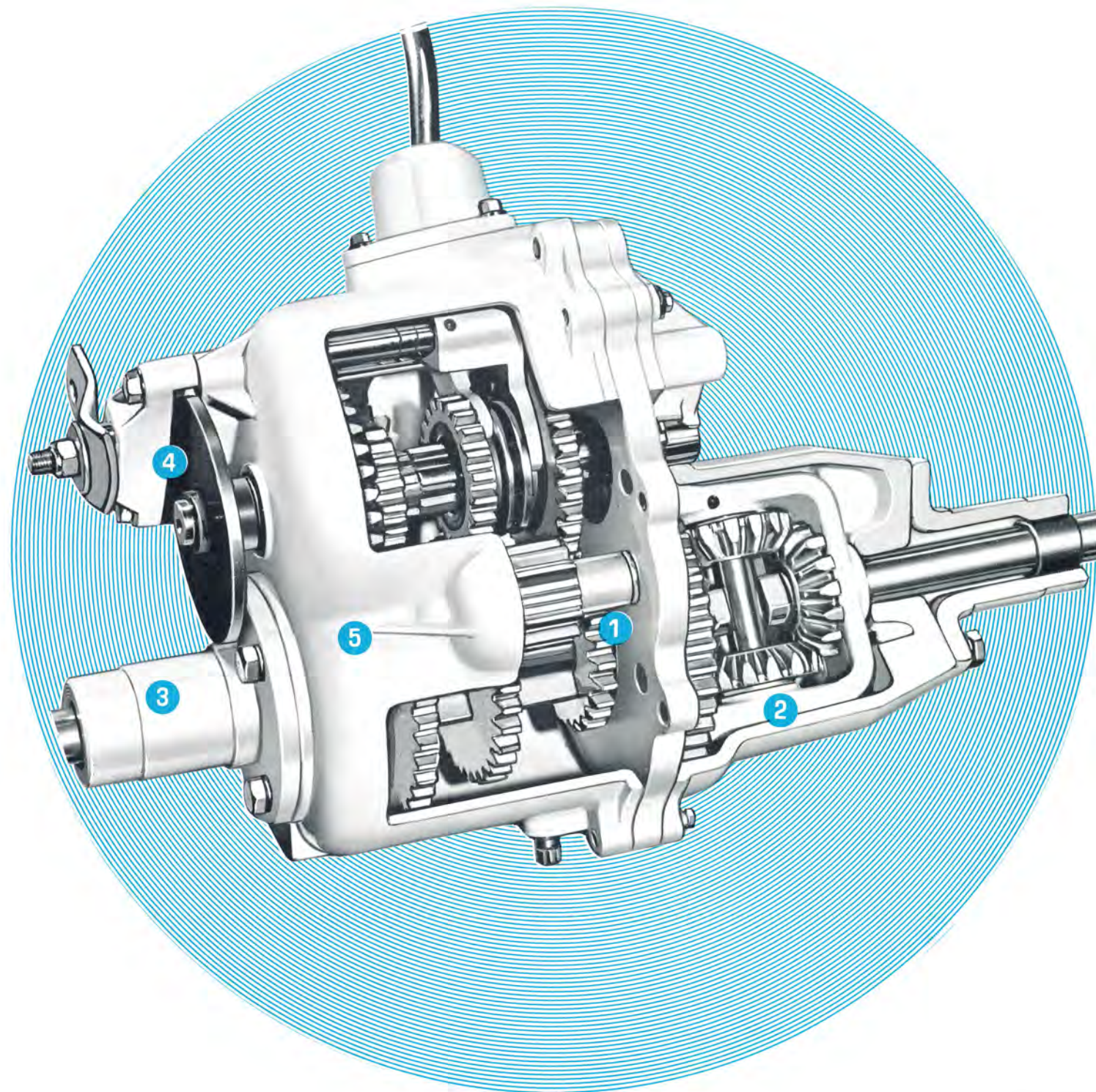
NOTE: Peerless 600 Series Transaxles are not suited to units using ground engaging attachments.

NOTE: Drawings covering installation Dimensions available upon request.



*Manufactured under U.S. Patent No. 304601

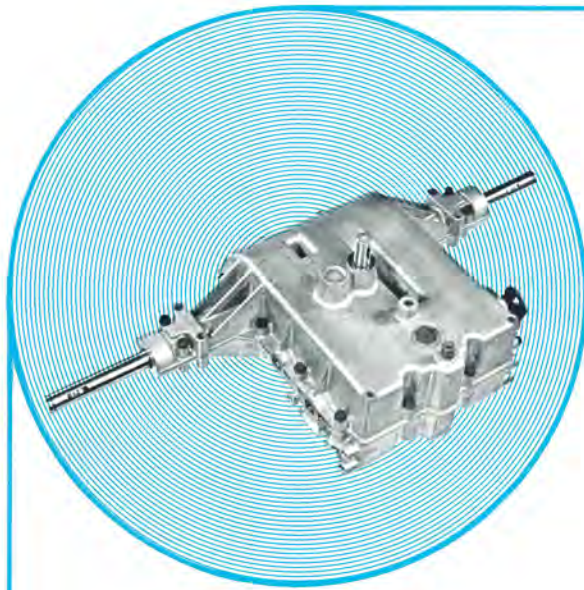
- ① **Gears** Cut & Heat-treated for durability.
- ② **Differential** Automotive-type bevel gears.
- ③ **Axle Housing Supports** Cast iron, with needle bearings.
- ④ **Vehicle Brake** Optional brake is available. Can be used as parking brake. (NOTE: Brake effective only when power source is de-clutched from transmission.) Coast brake only. Maximum brake arm torque 300 In. Lbs.
- ⑤ **Transaxle Housings** Die cast aluminum.
- Lubrication** Oil bath, with fill plug and drain plug.



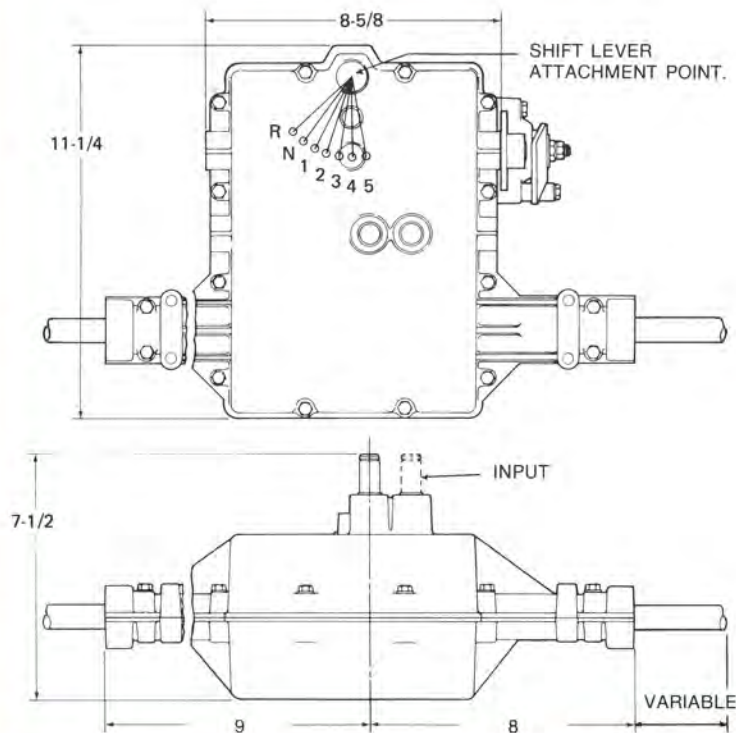
PEERLESS SERIES 800* TRANSAXLES

5 SPEED — 5 SPEEDS FORWARD, 1 REVERSE

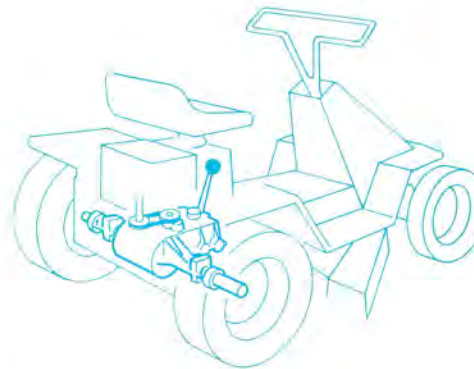
FOR ● RIDING MOWERS
● LAWN TRACTORS
● REAR ENGINE RIDING MOWERS
● ETC.



dimensional data



application



*Patent Applied For

specifications

Axle Torques

150 Ft. Lbs.

Maximum Weight on Transaxle

Determined by method of mounting. 450 Lbs. Maximum.

Speeds

5 forward, 1 reverse.

Type of Shift

Rotary, suitable for inline pattern.

Gear Ratios 5 Speed

1st gear —	46.8:1	4th gear —	15.7:1
2nd gear —	30.1:1	5th gear —	13.3:1
3rd gear —	20.1:1	Rev. gear —	40.1:1

Differential

Automotive-type bevel gears.

Axle Housing Supports

Cast in place.

Axles

3/4" diameter only with 3/16 x 7/8 Woodruff key; or to customer specification.

Distance Between Drive Wheels

To customer specification.

Neutral Start

Transmission allows the installation of a switch that senses if unit is in gear or neutral.

Brake

Optional brake is available. Can be used as parking brake. (NOTE: Brake effective only when power source is declutched from transaxle.) Coast brake only. Maximum brake arm torque 300 In. Lbs.

Size of Input

5/8" Diameter, with 3/16 x 5/8 Woodruff Key.

Input Speed

3000 RPM maximum.

Type of Drive

Pulley and belt.

Mounting

3-point mounting (2 on axle housing and 1 on side of Transaxle).

Shift Lever

Mounts on top of unit.

Transaxle Housings

Die cast aluminum.

Lubrication

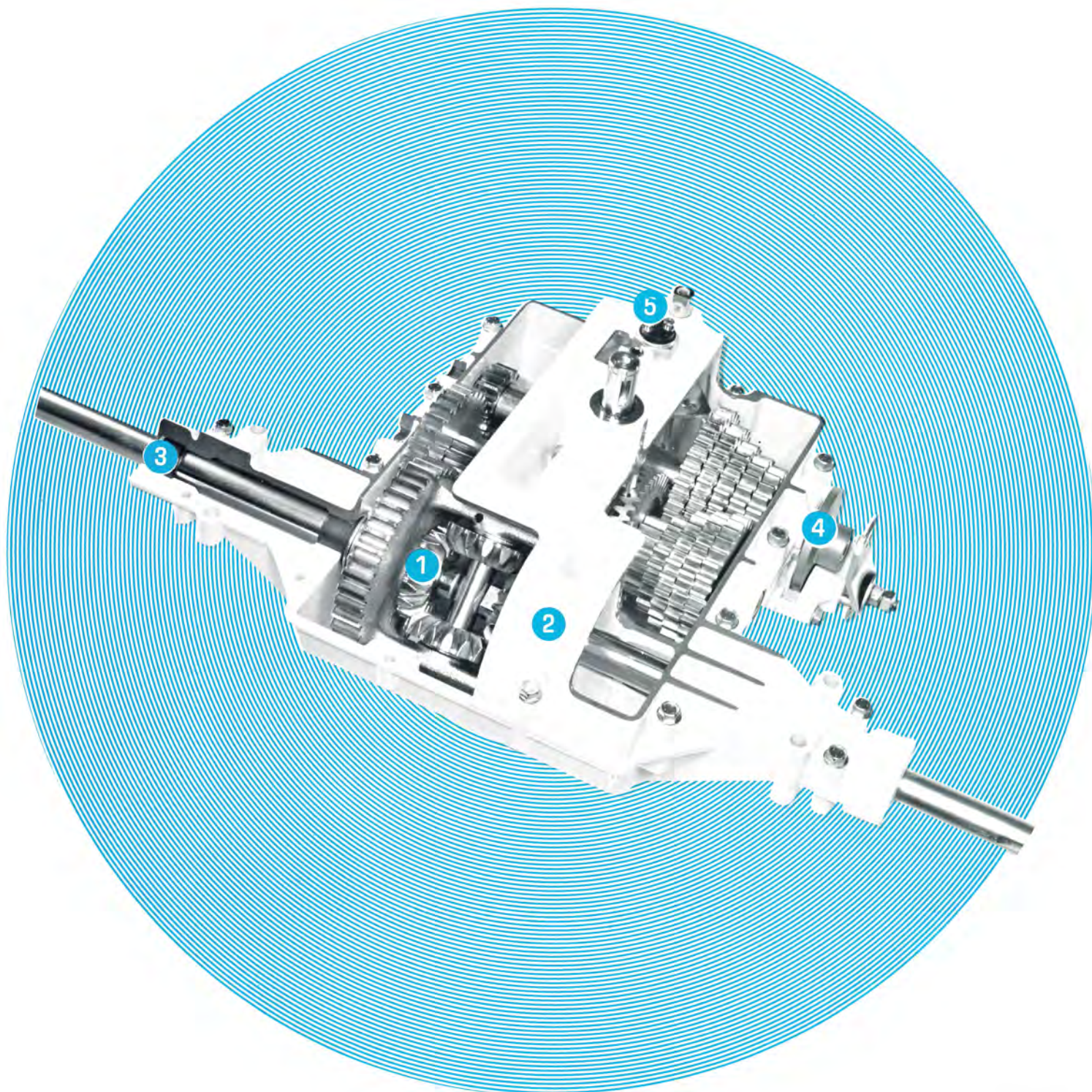
EP-Lithium grease.

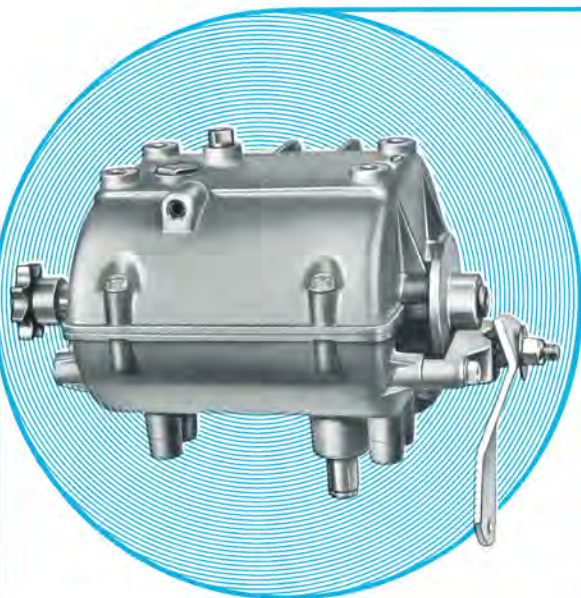
Maximum tire diameter: 18"

NOTE Peerless 800 Series Transaxles are not suited to units using ground engaging attachments.

NOTE: Drawings covering installation Dimensions available upon request.

- ① **Differential** Automotive-type bevel gears.
 - ② **Transaxle Housing** Die cast aluminum.
 - ③ **Bearings** Oil impregnated bushings with needle bearings on axles.
 - ④ **Vehicle Brake** Optional brake available.
 - ⑤ **Neutral Start Provision** for installation of sensing switch.
- Lubrication** E-P Lithium grease.



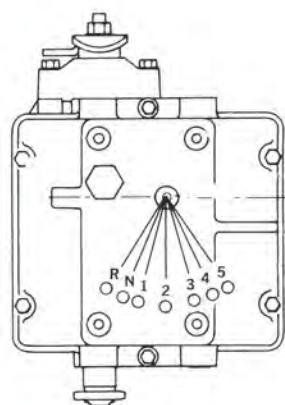
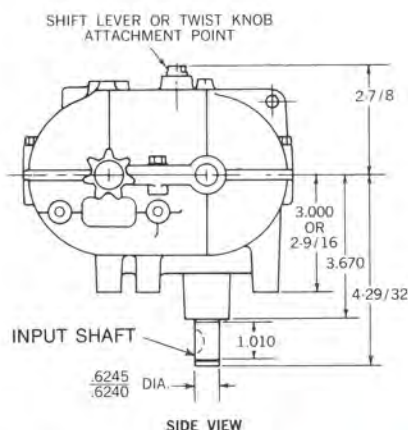


PEERLESS SERIES 700* TRANSMISSIONS

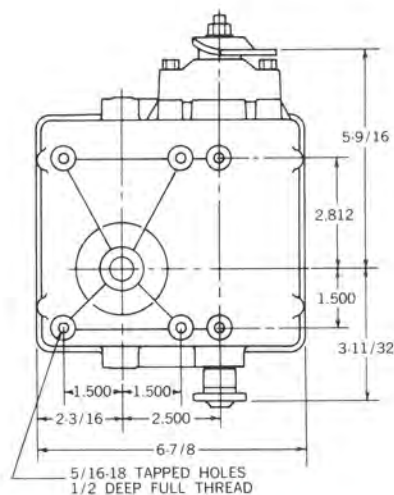
5 SPEED — 5 SPEEDS FORWARD, 1 REVERSE
4 SPEED — 4 SPEEDS FORWARD, 1 REVERSE
3 SPEED — 3 SPEEDS FORWARD, 1 REVERSE

FOR • RIDING MOWERS
• LAWN TRACTORS
• REAR ENGINE RIDING MOWERS

dimensional data



TOP VIEW



BOTTOM VIEW

specifications

Output Torque
20 Ft. Lbs.

Type of Shift
Rotary, suitable for inline pattern

Gear Ratios	5 Speed	4 Speed	3 Speed
1st gear —	7.0:1	7.0:1	4.5:1
2nd gear —	4.5:1	4.5:1	3.0:1
3rd gear —	3.0:1	3.0:1	2.0:1
4th gear —	2.4:1	2.0:1	
5th gear —	2.0:1		
Rev. gear —	6.0:1	6.0:1	6.0:1

Size of Input Shaft
 $\frac{5}{8}$ " diameter with Woodruff Key.

Maximum Input Speed
2400 RPM.

Type of Engine Drive
Pulley and belt

Shift Lever
Mounts on top of unit.

Mounting
Mounts on flat surface with four bolts ($\frac{5}{16}$ " diameter).

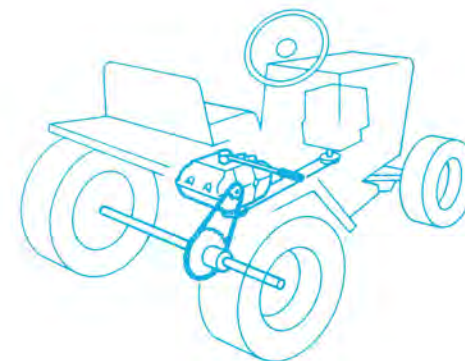
NOTE: Peerless Series 700 Transmissions are not suited to units using ground engaging attachments.

NOTE: Drawings covering installation Dimensions available upon request.

applications

RIDING MOWER — 700 Series Peerless Transmissions are ideal for riding mowers where the vertical shaft engine is mounted in the rear or front.

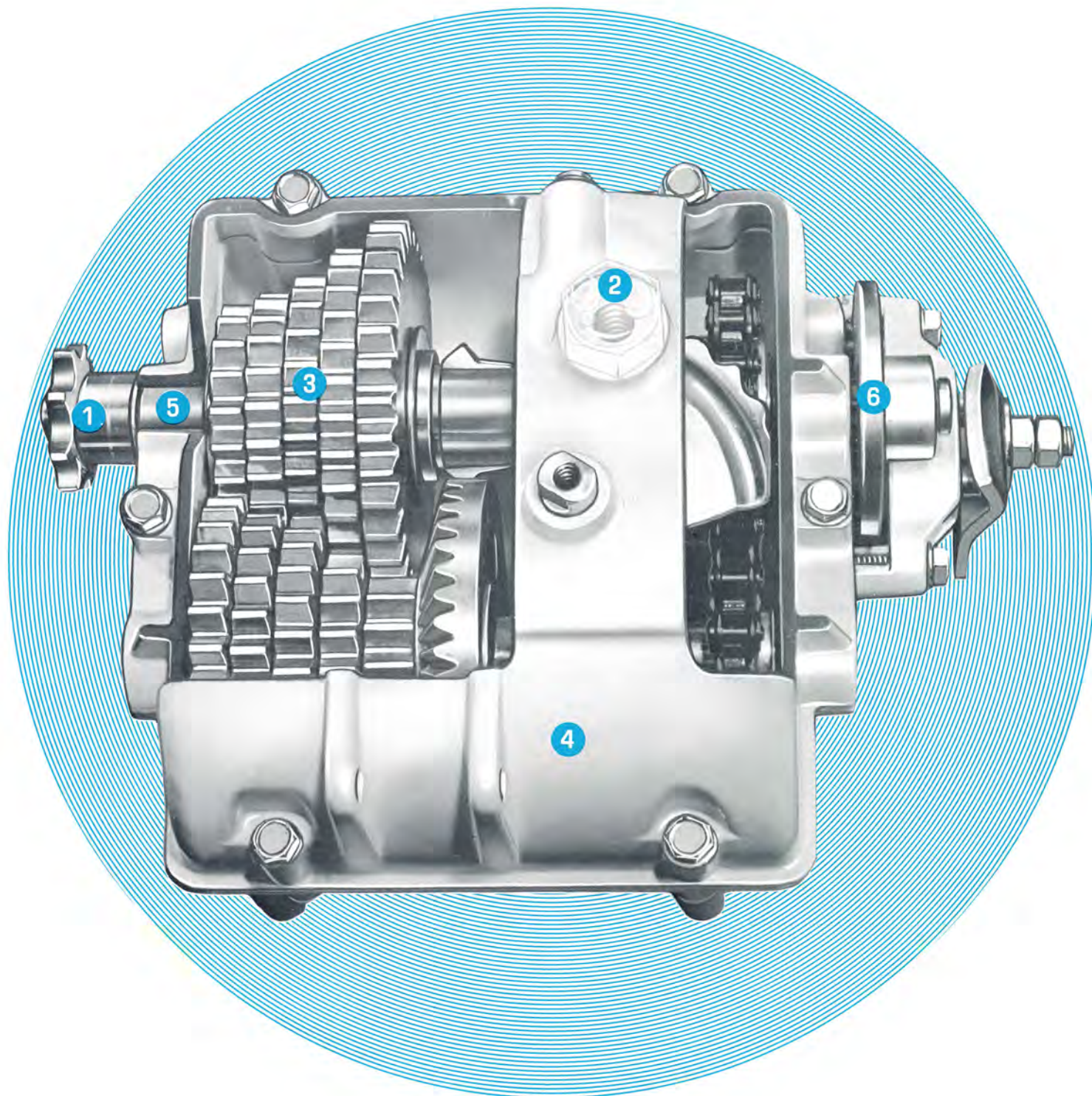
SNOW BLOWER — eliminates friction drive problems.



*Manufactured under U.S. Patent No. 3 812 735

- ① **Output Sprocket** Eight tooth standard equipment suitable for No. 40 or No. 41 chain, made from heat treated steel and can be mounted on either side of transmission.
- ② **Neutral Start** Transmission allows the installation of a switch that senses if unit is in gear or neutral.
- ③ **Gears** All gears are sintered metal heat treated for durability.
- ④ **Transmission Housings** Die cast aluminum.
- ⑤ **Bearings** Oil impregnated bushings, with needle bearings on input shaft.
- ⑥ **Vehicle Brake** Optional brake is available. Can be used as parking brake. (NOTE: Brake effective only when power source is decoupled from transmission.) Coast brake only. Maximum brake arm torque 300 In. Lbs.

Lubrication EP Lithium grease.





FOR • RIDING MOWERS
• LAWN TRACTORS
• REAR ENGINE RIDING MOWERS

SHIFT PATTERN



Gear Ratios	4 Speed	3 Speed
1st gear —	7.0:1	7.0:1
2nd gear —	4.5:1	3.0:1
3rd gear —	3.0:1	2.4:1
4th gear —	2.0:1	
Rev. gear —	6.0:1	6.0:1

Shift Lever
Mounts on top of unit.

Mounting
Mounts on flat surface with four bolts ($\frac{5}{16}$ " diameter).

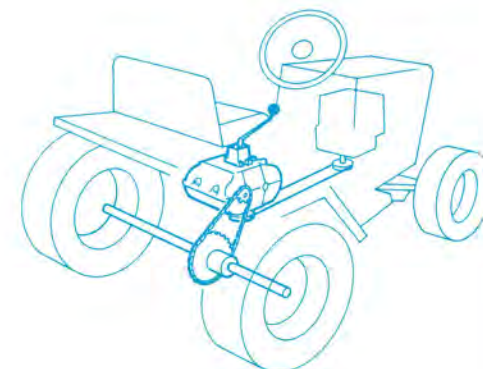
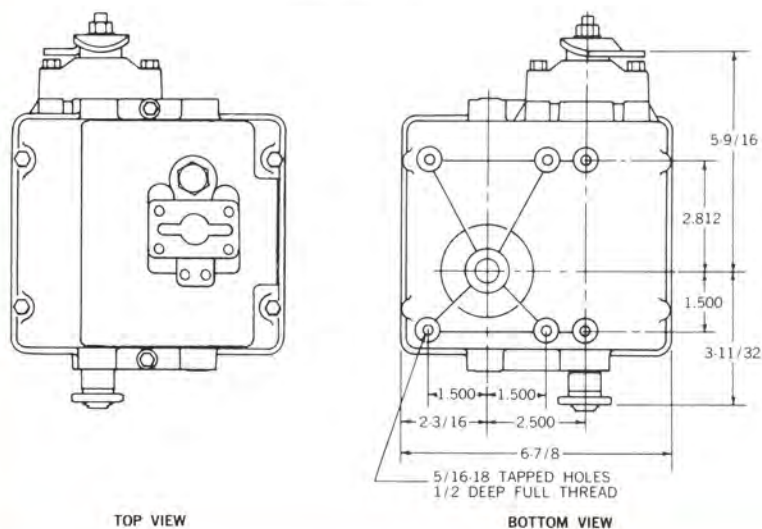
NOTE: Peerless Series 700 Transmissions are not suited to units using ground engaging attachments.

NOTE: Drawings covering installation Dimensions available upon request.

applications

RIDING MOWER — 700 Series
Peerless Transmissions are ideal for riding mowers where the vertical shaft engine is mounted in the rear or front.

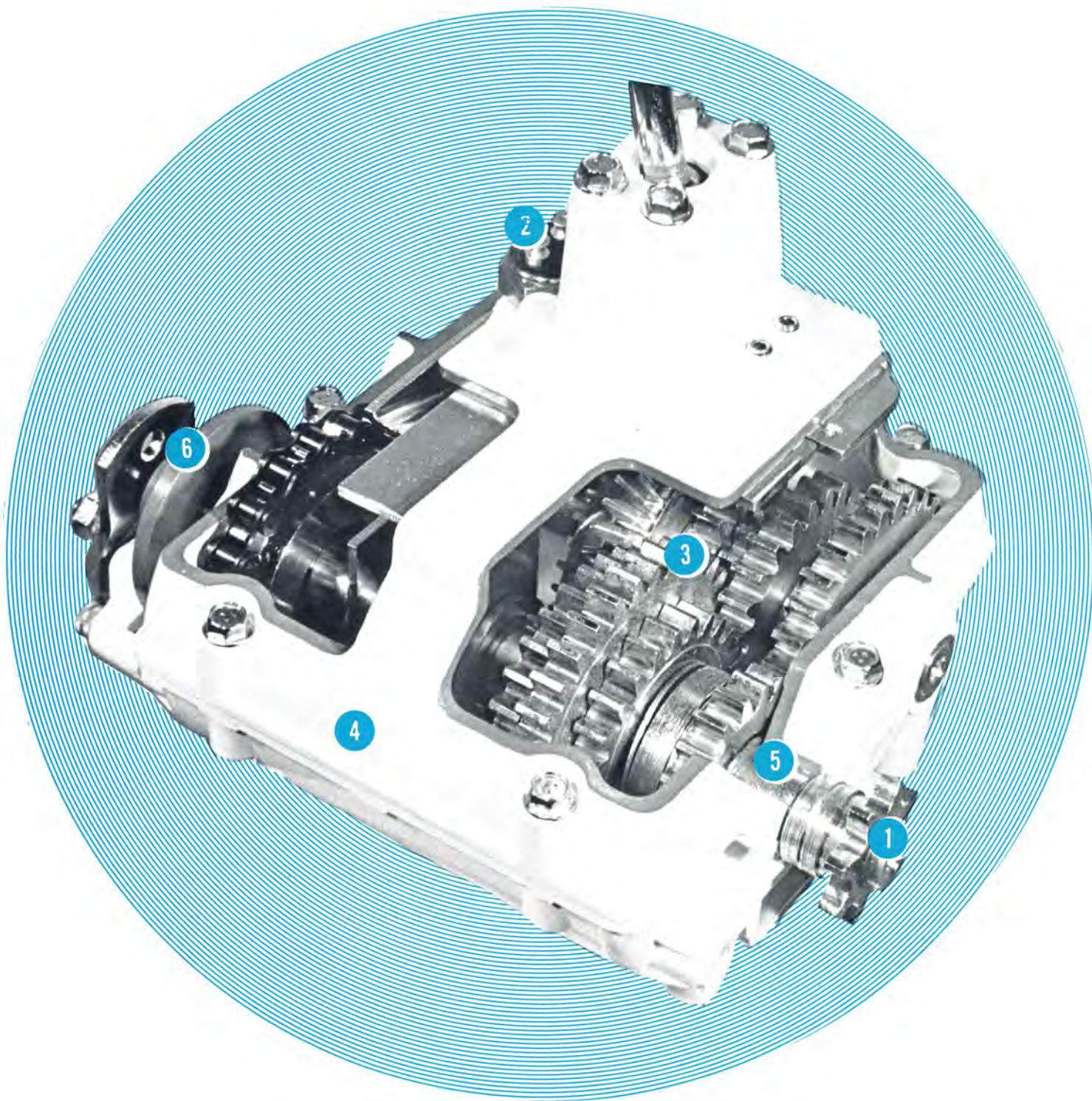
SNOW BLOWER — eliminates friction drive problems.

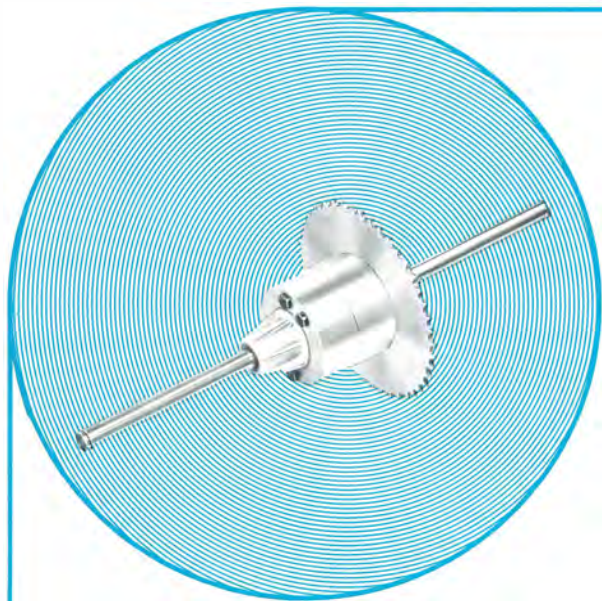


*Patent Pending

- ① **Output Sprocket** Eight tooth standard equipment suitable for No. 40 or No. 41 chain, made from heat treated steel and can be mounted on either side of transmission.
- ② **Neutral Start** Transmission allows the installation of a switch that senses if unit is in gear or neutral.
- ③ **Gears** All gears are sintered metal heat treated for durability.
- ④ **Transmission Housings** Die cast aluminum.
- ⑤ **Bearings** Oil impregnated bushings, with needle bearings on input shaft.
- ⑥ **Vehicle Brake** Optional brake is available. Can be used as parking brake. (NOTE: Brake effective only when power source is de-clutched from transmission.) Coast brake only. Maximum brake arm torque 300 In. Lbs.

Lubrication EP Lithium grease.



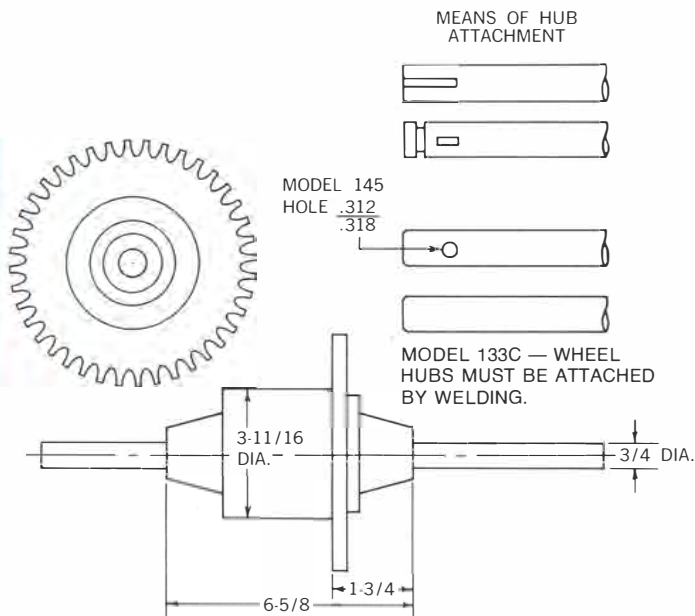


PEERLESS SERIES 100 • 133C 145A • 159A • 160 DIFFERENTIAL AXLES

100 SERIES — FOR RIDING MOWERS OR OTHER
LIGHT DUTY INDUSTRIAL EQUIPMENT
133 & 145 SERIES — FOR SINGLE PASSENGER
159A & 160 — LIGHTWEIGHT RECREATIONAL VEHICLES
APPROXIMATE WEIGHT 10 POUNDS

dimensional data

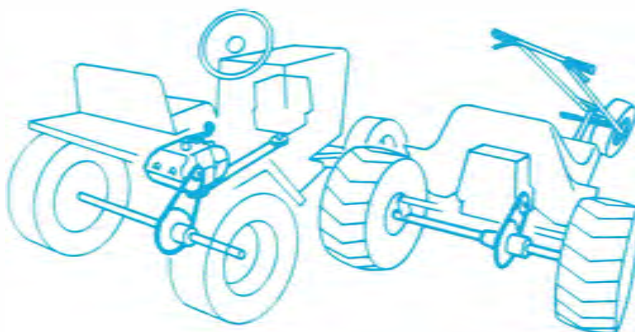
applications



RECREATIONAL VEHICLES — Lightweight single passenger designs of the terra tire three wheel variety. Support must be by four self aligning ball bearings, 2 located next to differential housing and two close to wheels.

RIDING LAWN MOWER — To be used with Peerless series 700 as pictured.

LIGHT INDUSTRIAL CARRIER — Also adapts well to the design of light industrial carts and carriers. While the maximum load of these units is limited the Differential Axle provides an economical, simplified drive mechanism.



specifications

Axle Torque

100 Series—100 Ft. Lbs.— $\frac{3}{4}$ " DIA
133 & 145 Series—150 Ft. Lbs.— $\frac{3}{4}$ " DIA
159 & 160 Series—150 Ft. Lbs.—1" DIA

Maximum Weight On Differential

Determined by method of mounting.

Distance Between Drive Wheels

To customer specification.

Sprocket

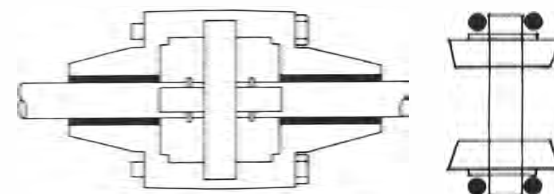
Furnished with or without sprocket. Standard is 40- or 45-48-54-60-tooth stamped steel sprocket for use with No. 40 and 41 chain; other sizes available on request.

Maximum Tire Diameter

100 Series—16 Inches
133 & 145 Series—20 Inches
159 & 160 Series—20 Inches

NOTE: Peerless Differential Axles are not suited to units using ground engaging attachments.

OIL IMPREGNATED BUSHINGS



FOUR BOLT DESIGN*

Exclusive Peerless four bolt design has these advantages:

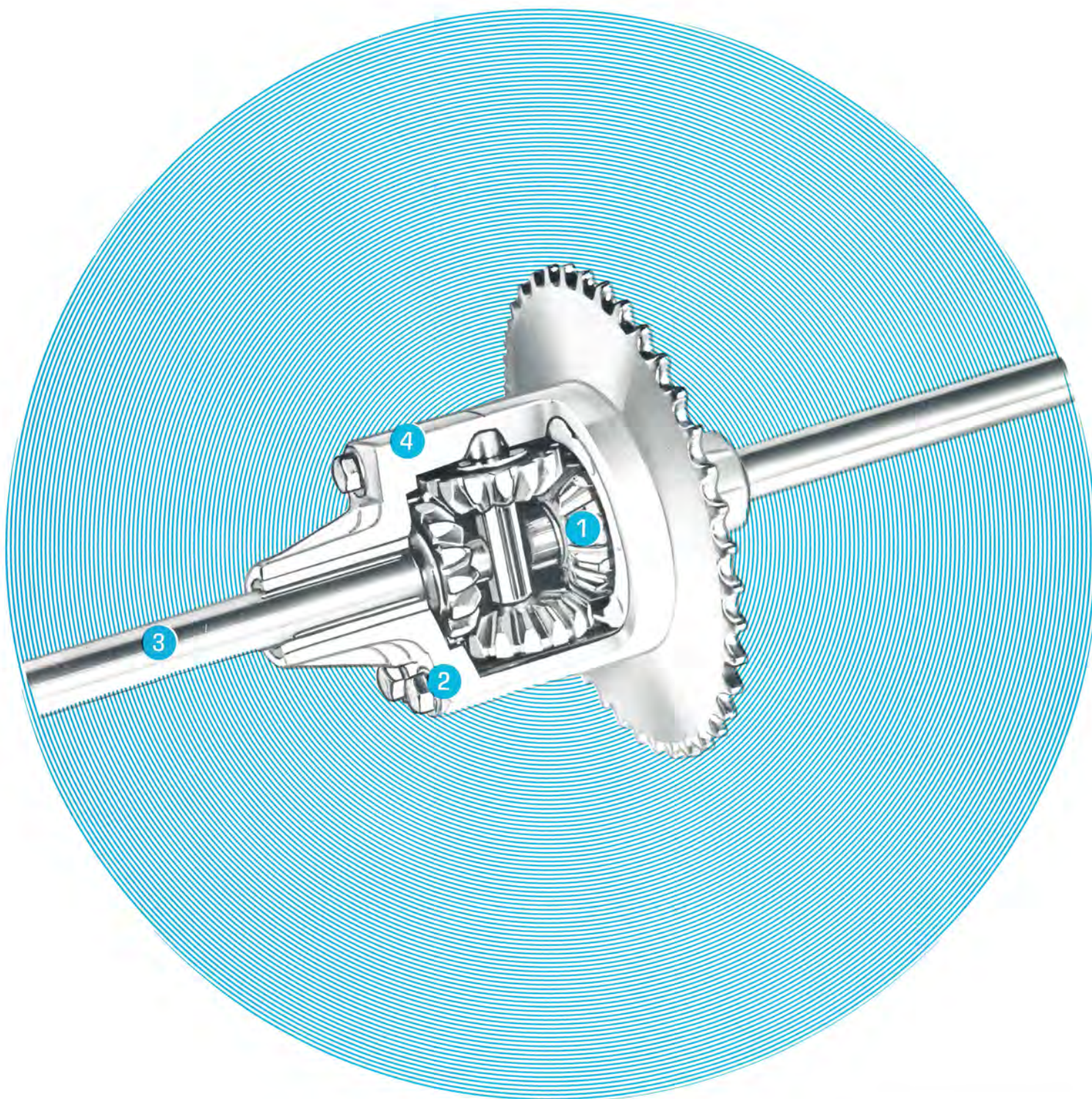
- Holds component parts together
- Acts as backstop for thrust washers
- Holds sprocket on
- Drives differential pin

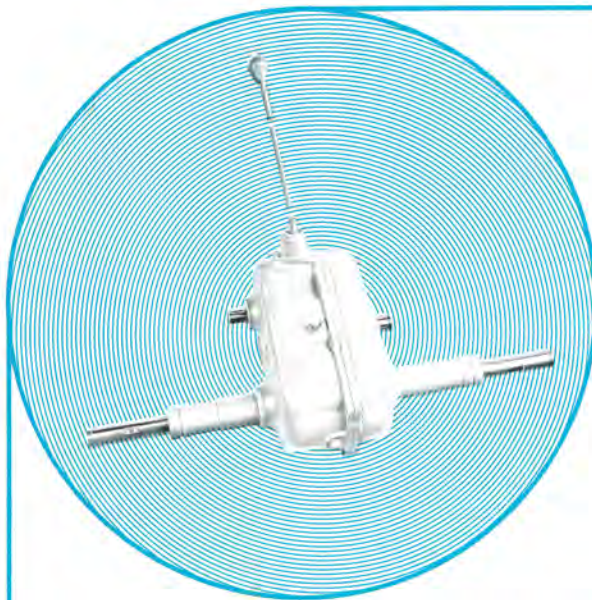
NOTE: Drawings covering installation Dimensions available upon request.

*Manufactured under U.S. Patent No. 3 406 592

- ① **Gears** Sintered metal. Automotive-type bevel gears, backed up by case hardened thrust washers. Series 159 & 160 gears are cut & heat treated steel.
- ② **Housing** Die cast aluminum with oil impregnated bearings.
- ③ **Axles** $\frac{3}{4}$ " diameter. **100 Series** - $\frac{3}{16}$ " x $\frac{7}{8}$ " Woodruff Key or to customer specification. **133C & 145A Series** — Cadmium plated heat treated alloy steel.
- ④ **Bolts** 4 high-carbon steel bolts with positive lock nuts; hold housing assembly together, provide mounting for sprocket.

Lubrication Permanent lubrication.

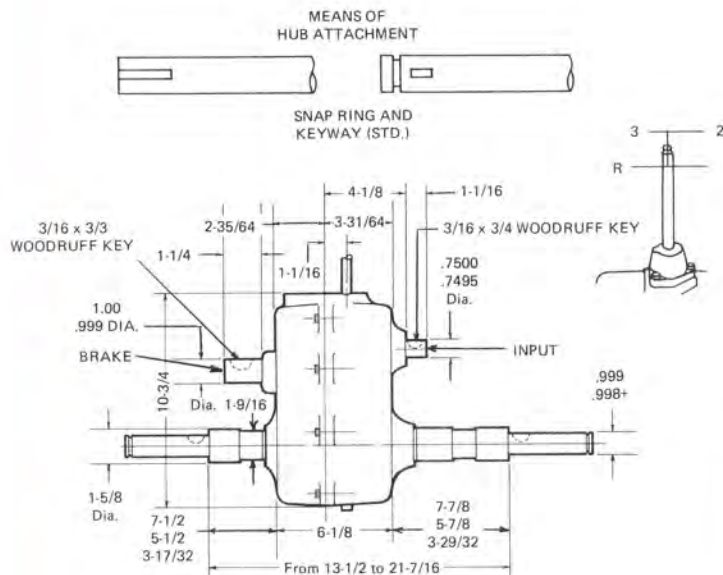




PEERLESS SERIES 1200* TRANSAXLES

FOR • RIDING MOWERS
• COMPACT TRACTORS
• PERSONNEL CARRIERS, ETC.
APPROXIMATE WEIGHT 50 POUNDS

dimensional data



applications

RIDING MOWER—Popular design for models with horizontal engines. With 1200 Transaxle, will pull gang mowers for grounds maintenance and institutional mowing. The 1200 Transaxle simplifies design and power train, making it possible to produce the mower more economically.

SULKY MOWER—This type of multi-purpose rider will take various attachments, such as snow blade, snowthrower and brush. Operator rides in sulky towed along behind the power unit.

specifications

Axle Torque
230 Ft. Lbs.

Maximum Weight On Transaxle
500 Lbs.

Speeds
3 forward, 1 reverse.

Type Shift
Selective, as on farm tractors. Shift lever configuration to customer specification.

Gear Ratios
1st gear — 58.5:1 3rd gear — 22.2:1
2nd gear — 32.7:1 Rev. gear — 42.5:1

Axles
Series 1200 — 1" diameter only with 1/4 x 1 1/8 Woodruff Key, or to customer specification.

Distance Between Drive Wheels
To customer specification.

Vehicle Brake Provision
1" diameter shaft with 3/8 x 3/4 key. Suitable for band or disc brakes. Wheel-to-shaft ratio 8.8:1.

Size of Input Shaft
3/4" diameter with 3/8 x 3/4 key.

Maximum Input Speed
3600 RPM.

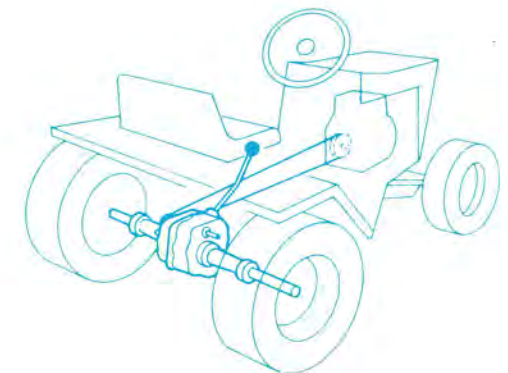
Type of Drive
Pulley and belt.

Mounting

3-point mounting

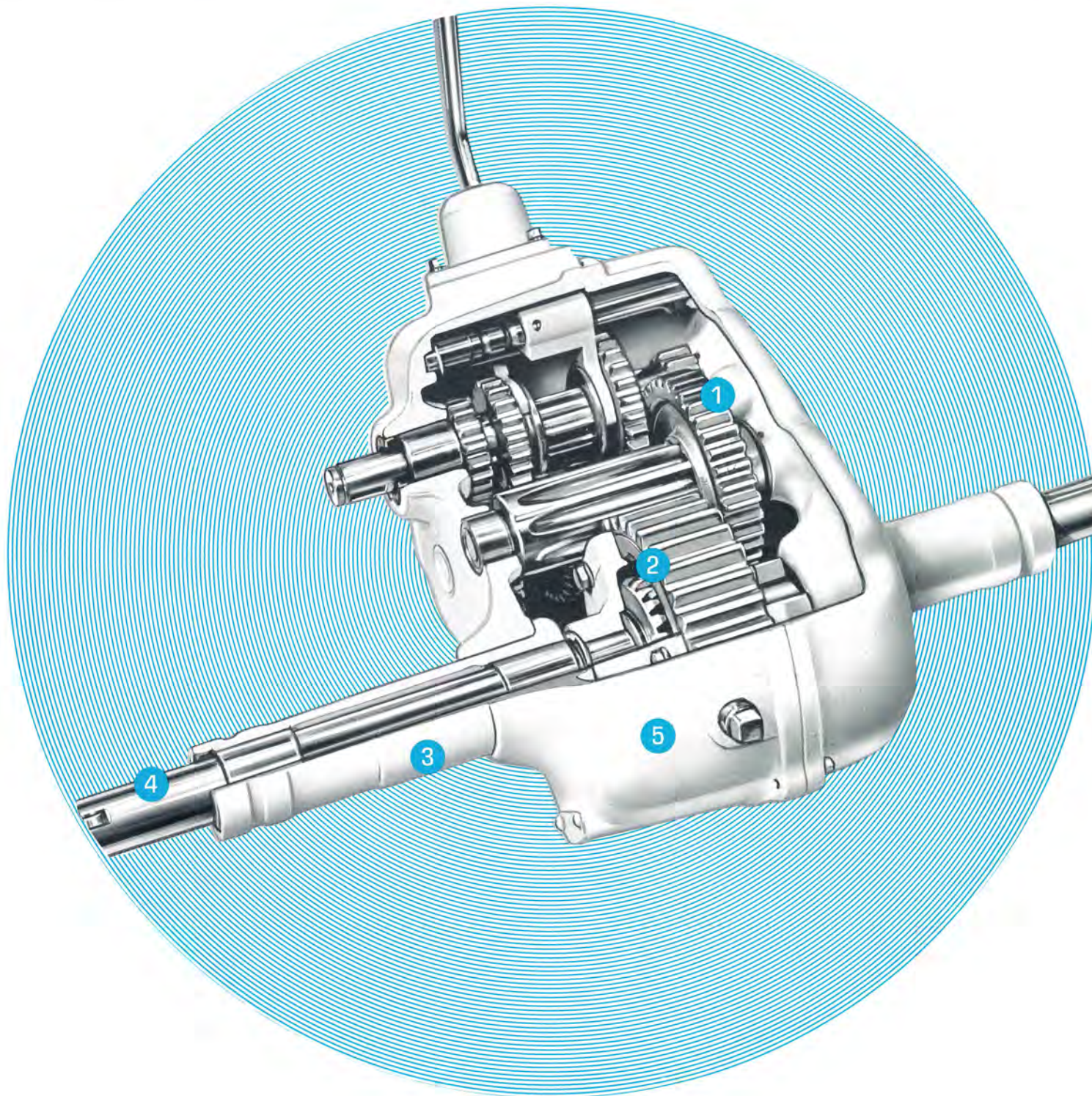
Maximum Tire Diameter
20 Inches

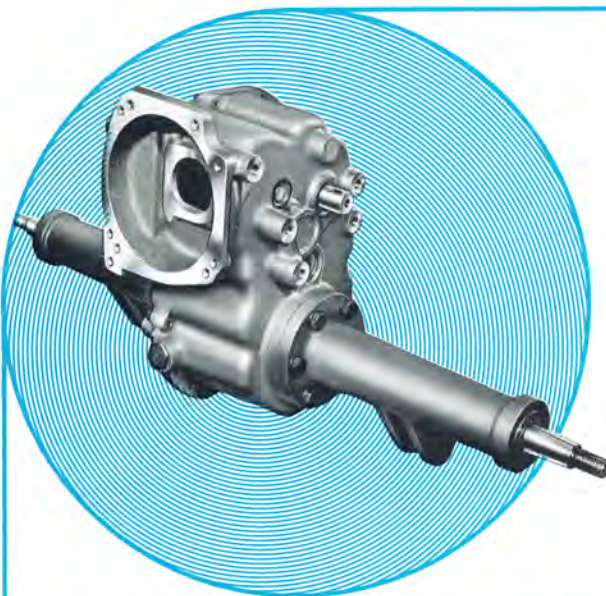
NOTE: Peerless Series 1200 transaxles are not suited to units using ground engaging attachments.



*Manufactured under U.S. Patent No. 3040601

- ① **Gears** Cut, heat-treated steel.
- ② **Differential** Automotive-type bevel gears.
- ③ **Axle Housing Supports** Cast iron, with bushings.
- ④ **Axles** Series 1200—1" diameter only.
- ⑤ **Transaxle Housings** Cast iron.
- Lubrication** Oil bath with fill and drain plugs.



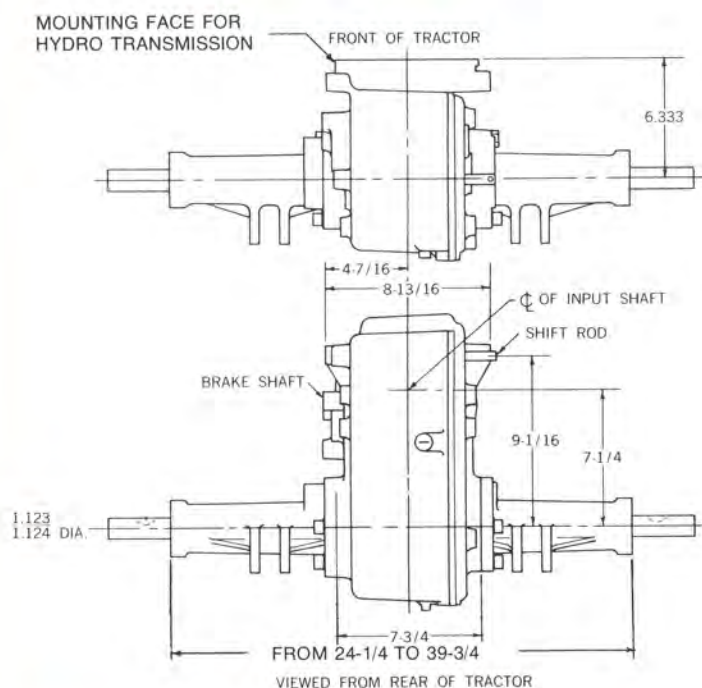


PEERLESS SERIES 2500 TRANSAXLES

FOR USE WITH HYDROSTATIC TRANSMISSION,** ON GARDEN TRACTORS AND TURF EQUIPMENT, ETC. AND SUITED FOR "INLINE" APPLICATIONS.

APPROXIMATE WEIGHT 90 POUNDS

dimensional data



specifications

Axle Torque

1200 Ft. Lbs.

Maximum Weight on Assembly

1500 Lbs.

Maximum Tire O.D.

27"

Speeds

2

Gear Ratio*

Hi — 13.9 or 20.6 or 14.0 or 8.7 or 18.6 or 11.8
Lo — 20.4 or 40.0 or 27.3 or 20.4 or 27.3 or 22.9

Axles

1 1/8 diameter only with 1/4 x 1 1/8 Woodruff Key, or to customer specification.

Distance Between Drive Wheels

To Customer specification.

Vehicle Brake Provision

1" diameter shaft with 3/16 x 3/4 key. Suitable for band or disc brakes. Also mounting face on axle housing for wheel brakes available.

Maximum Input Speed

3600 RPM.

Type of Drive

Hydrostatic**

Suitable for use with ground engaging attachments.

**Eaton Corporation
Marshall, Michigan 49608

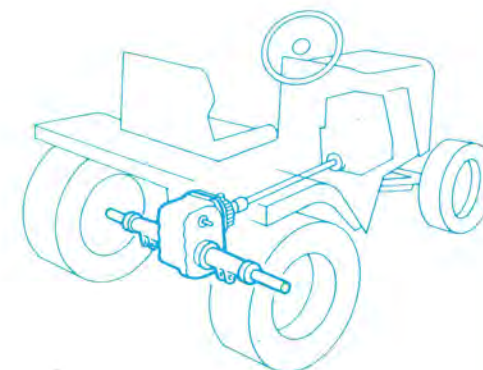
**Sundstrand Hydro Transmission
Ames, Iowa 50010

*Contact factory for available standard ratio options.

NOTE: Drawings covering installation Dimensions available upon request.

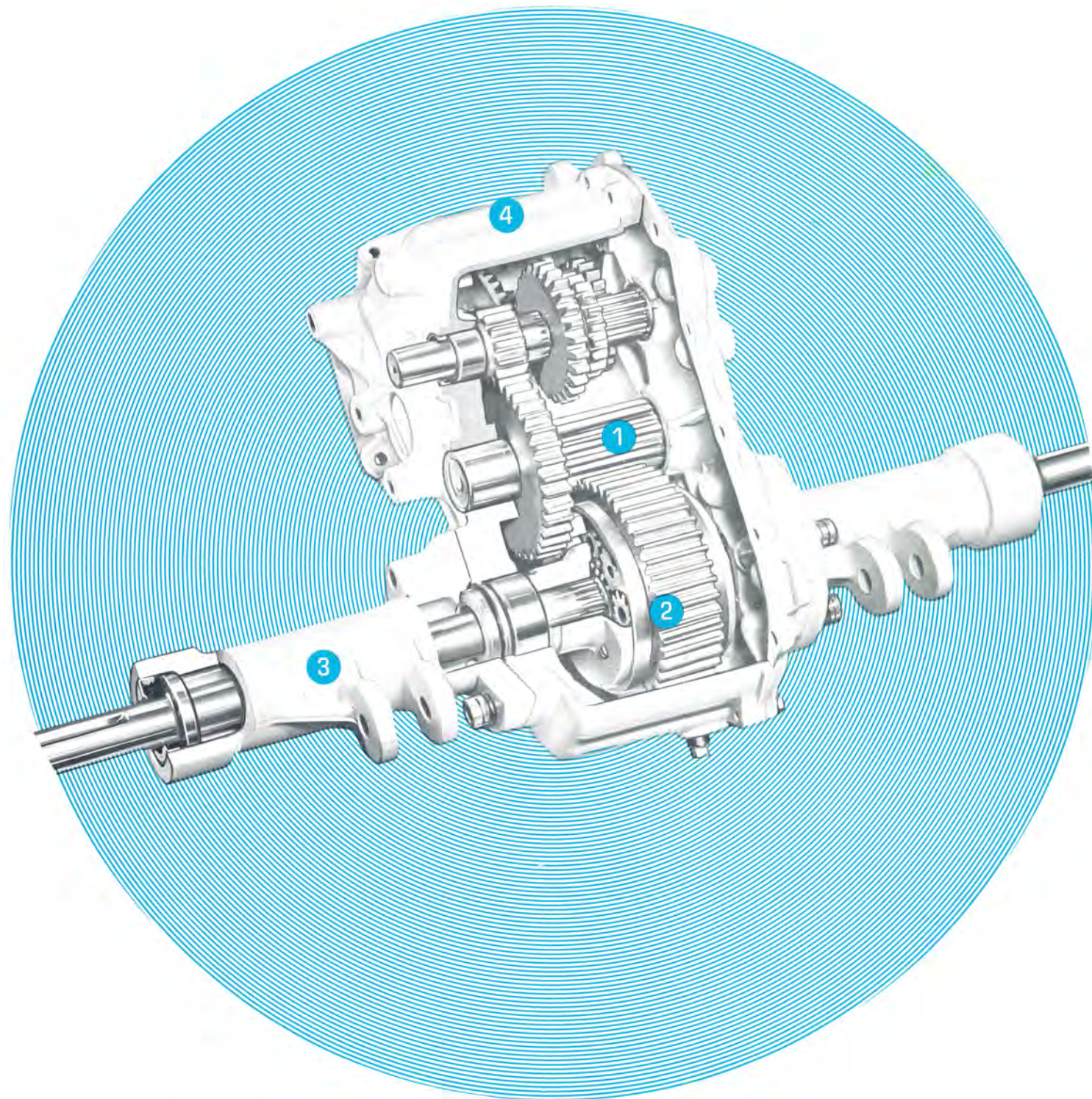
applications

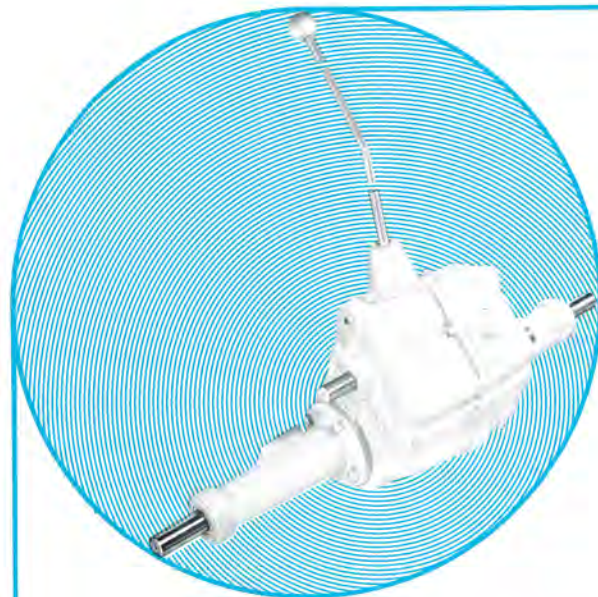
IN-LINE TRACTORS • MATERIAL HANDLING EQUIPMENT • PERSONNEL CARRIERS
• RECREATIONAL VEHICLES • COMMERCIAL MOWERS • CONSTRUCTION EQUIPMENT



- ① **Gears** Cut, Heat-treated steel.
- ② **Differential** Spur gear with limited slip feature at high draw-bar pull.
- ③ **Axle Housing** Cast iron, with ball bearing and Cat. "O" Hitch Points.
- ④ **Assembly Housings** Reinforced Die Cast Aluminum.

Lubrication Oil bath with fill and drain plugs. Suited for hydrostatic cooling.

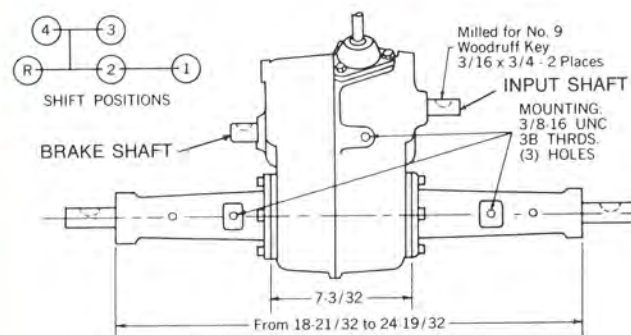




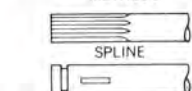
PEERLESS SERIES 2300* TRANSAXLES

FOR • GARDEN TRACTORS
APPROXIMATE WEIGHT 70 POUNDS

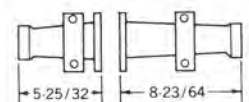
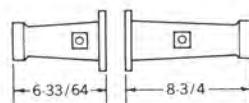
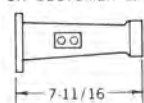
dimensional data



VARIABLE HUB ATTACHMENT METHODS



SNAP RING & WOODRUFF KEY OR CUSTOMER SPEC.



AXLE HOUSING - Width

Types A, B and C above available either in pairs of the same width or in "long" and "short" combinations, as shown above.

applications

GARDEN TRACTOR—The traditional pulley and belt drive train used in most garden tractors. Equipped with 2300 Transaxle this type of tractor will pull a one-bottom plow.

IN LINE TRACTOR — By positioning the engine with PTO forward, a tractor with minimum turning radius is made possible. Power can be transmitted to rear wheels with a 2300 Transaxle thru a Peerless right angle drive.

specifications

Axle Torque

750 Ft. Lbs.

Maximum Weight On Transaxle

800 Lbs.

Speeds

4 forward, 1 reverse

Type Shift

Selective, as on farm tractors. Shift lever configuration to customer specification.

Gear Ratios

1st gear — 174.0:1

2nd gear — 58.5:1

3rd gear — 32.7:1

4th gear — 22.2:1

Rev. gear — 42.5:1

Axles

1" diameter only with $\frac{1}{4} \times \frac{1}{8}$ Woodruff Key, or to customer specification.

Distance Between Drive Wheels

To customer specification.

Vehicle Brake Provision

1" diameter shaft with $\frac{3}{16} \times \frac{3}{4}$ key. Suitable for band or disc brakes. Wheel-to-shaft ratio 8.8:1.

Size of Input Shaft

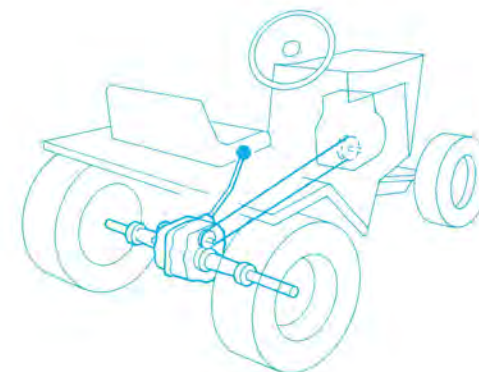
$\frac{3}{4}$ " diameter with $\frac{3}{16} \times \frac{3}{4}$ key.

Maximum Input Speed

3600 RPM

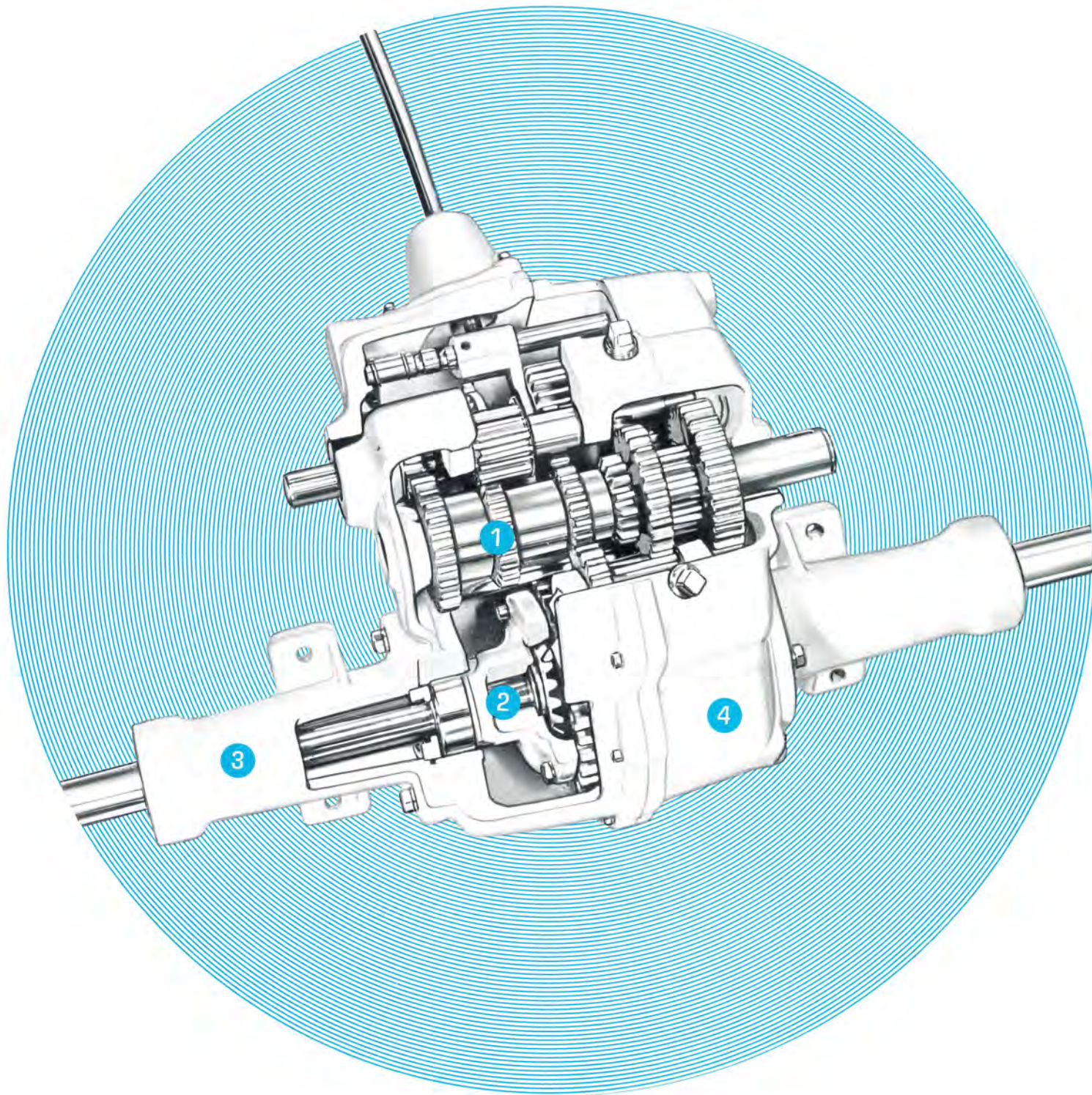
2300 Transaxle features special LOW SPEED, ideal for use with tiller, snow blower and other ground engaging attachments. Maximum tire diameter 23".

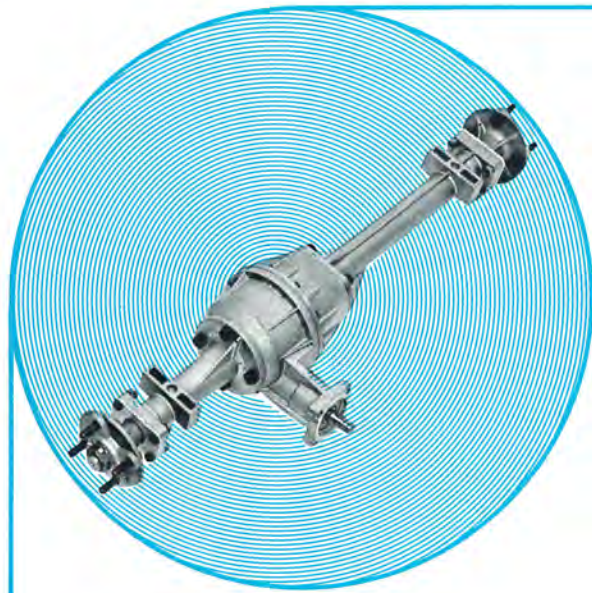
NOTE: Drawings covering installation Dimensions available upon request.



*Manufactured under U.S. Patent No. 3040601

- ① **Gears** Cut, heat-treated steel.
- ② **Differential** Automotive-type bevel gears.
- ③ **Axle Housing Supports** Cast iron, with ball bearings.
- ④ **Transaxle Housings** Cast iron.
- Lubrication** Oil bath with fill and drain plugs.

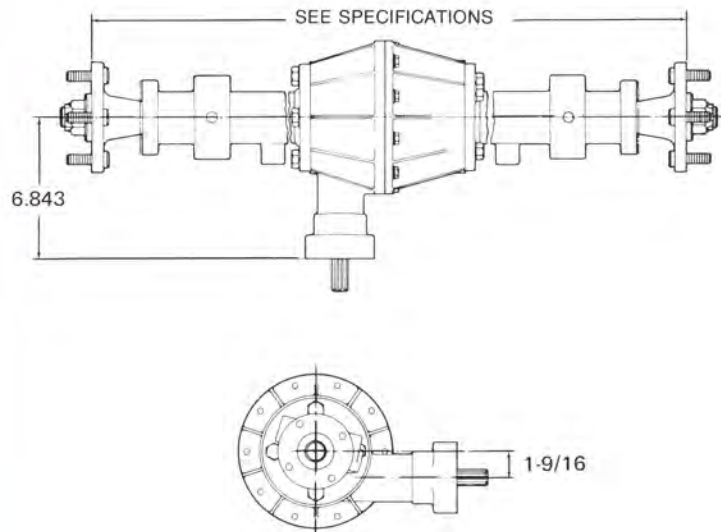




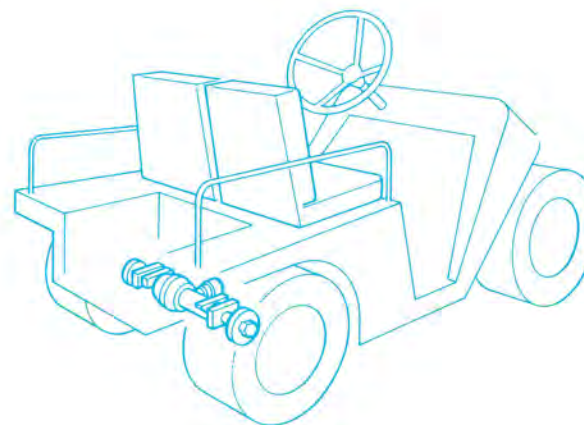
PEERLESS "GOLF CART" GEAR REDUCTION AND DIFFERENTIAL SERIES 2700*

FOR GOLF CARTS (GAS AND ELECTRIC)
 AND PERSONNEL CARRIERS
 APPROXIMATE WEIGHT 52 POUNDS

dimensional data



application



specifications

Maximum Weight On Assembly
 1200 Lbs.

Speeds
 Constant mesh reduction.

Gear Ratio
 12.25:1

Axles
 Wheel hub attached — (4 bolt type).

Distance Between Drive Wheels
 Consult sales department for several options.

Vehicle Brake Provision
 Wheel brake available. (Furnished by others.)

Maximum Input Speed
 3600 RPM.

Gears
 Cut, heat-treated steel.

Differential
 Automotive-type bevel gears.

Axle Housing Supports
 Die cast aluminum with ball bearings.

Lubrication
 Oil bath with fill and level plug.

All Aluminum Construction

NOTE: Drawings covering installation Dimensions available upon request.

*Patent Applied For

specifications

Axle Torque
230 Ft. Lbs.

Maximum Weight On Assembly
500 Lbs.

Speeds
Constant mesh reduction

Gear Ratio
22.2:1 or 19.7:1

Axles
1" diameter with $\frac{1}{4} \times 1\frac{1}{8}$ Woodruff Key, or to customer specification.

Distance Between Drive Wheels
To customer specification.

Vehicle Brake Provision
1" diameter shaft with $\frac{3}{16} \times \frac{3}{4}$ key. Suitable for band or disc brakes. Wheel-to-shaft ratio 8.8:1.

Maximum Input Speed
3600 RPM.

Type Of Drive
Hydrostatic**

Gears Cut, heat-treated steel.

Differential Automotive-type bevel gears.

Axle Housing Supports Cast iron, with bushings.

Housings Die Cast Aluminum

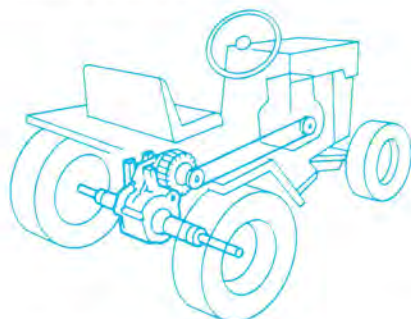
Lubrication Oil bath with fill and drain plugs.

NOTE: Peerless Series 1300 hydro are not suited to units using ground engaging attachments.

NOTE: Drawings covering installation Dimensions available upon request.

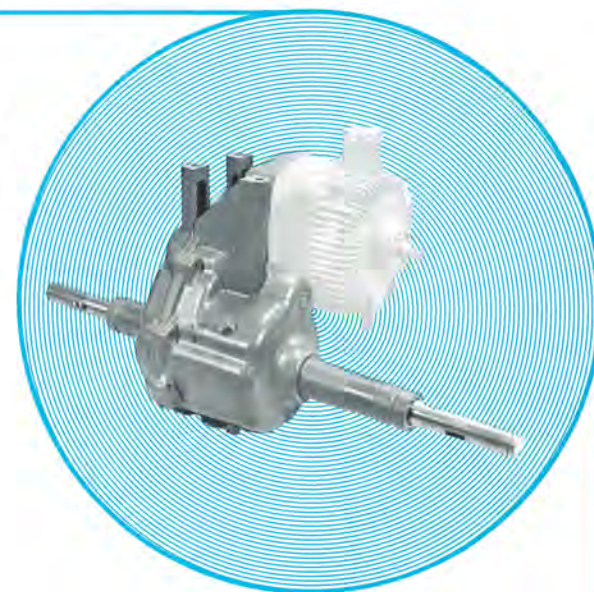
**Contact Eaton Corporation
Marshall, Michigan 49608

Maximum tire diameter 20".

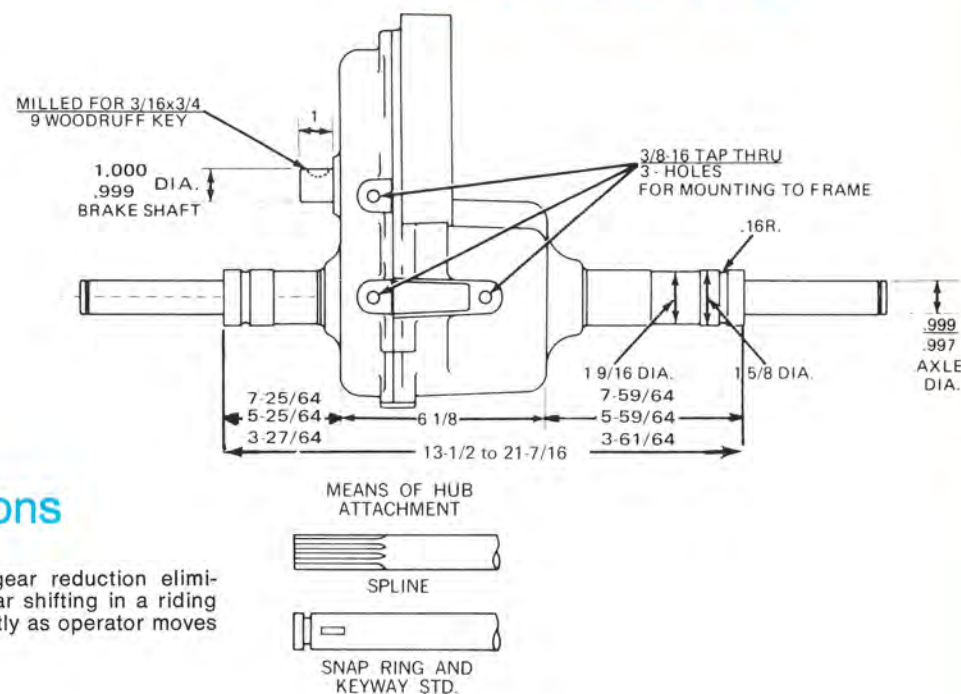


PEERLESS "HYDROSTATIC" GEAR REDUCTION SERIES 1300*

FOR USE WITH HYDROSTATIC
TRANSMISSION, ON
RIDING MOWERS, ETC.
APPROXIMATE WEIGHT 30 POUNDS



dimensional data



applications

RIDING MOWER — Hydraulic gear reduction eliminates the need for separate gear shifting in a riding mower. Speed changes constantly as operator moves shift forward or backward.

*Manufactured under U.S. Patent No. 3040601

PEERLESS 2 SPEED AND 3 SPEED TRANSMISSIONS SERIES 200

FOR SELF-PROPELLED LAWN MOWERS
APPROXIMATE WEIGHT 6 POUNDS

specifications

Gears

High strength sintered metal.

Housing

Die cast aluminum with oil impregnated bronze bearings.

Axles

$\frac{3}{8}$ " diameter x $1\frac{3}{8}$ " with milling for $\frac{1}{8}$ " x $\frac{3}{8}$ ".
No. 213 woodruff key & locking ring at ends for gear drive to wheels; axle diameter $\frac{1}{2}$ ".

Distance Between Drive Wheels

To customer specification.

Lubrication

Permanently lubricated with molybdenum disulfide, e. p. lithium grease.

Shift Lever

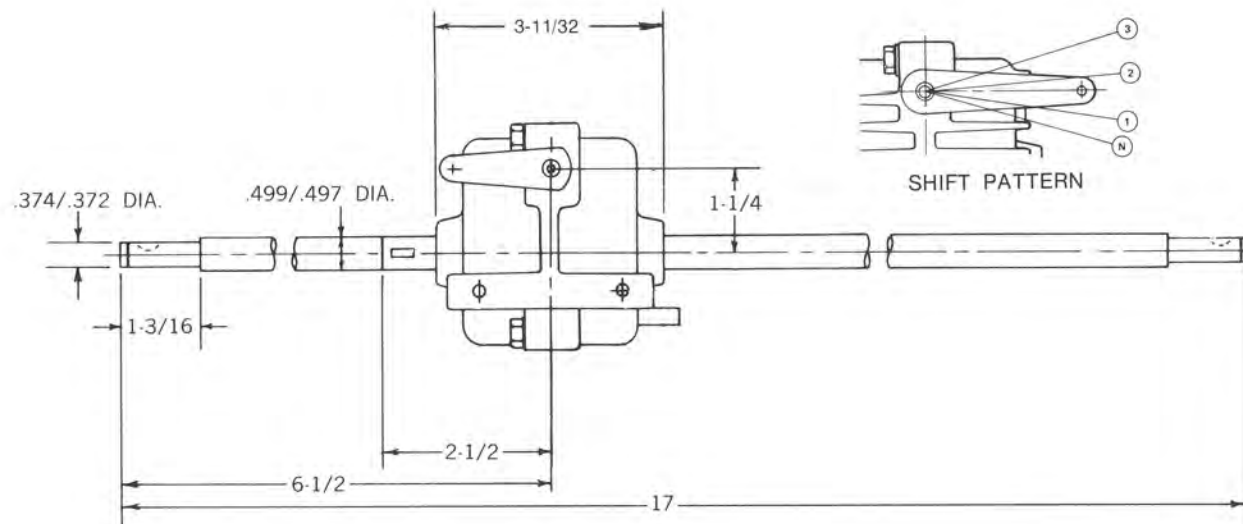
Optional two position mounting (See diagram).

Gear Ratio

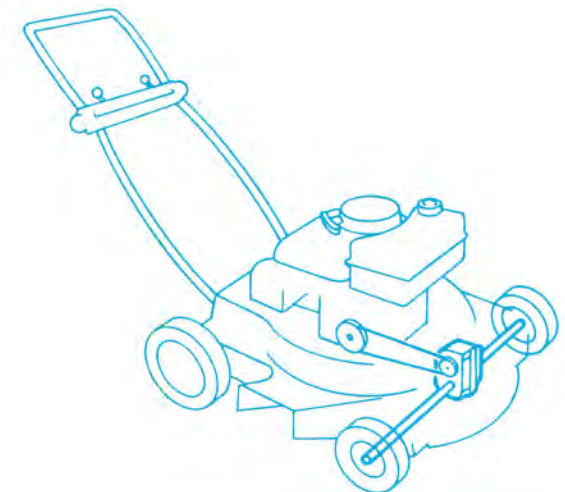
TWO SPEED	THREE SPEED
High— .840:1	1st—1.190:1
Low—1.190:1	2nd—1.000:1
	3rd— .840:1

NOTE: Drawings covering installation Dimensions available upon request.

dimensional data



applications



specifications

SINGLE HEAD

Maximum H.P. (Per Head) 7 H.P., at 3600 RPM.

Maximum Input Speed 3600 RPM.

Maximum Static Torque 1200 In. Lbs.

Gear Ratio 1:1

Maximum Diameter Of Shafts $\frac{7}{8}$ "

Gears Heat-treated coniflex bevel gears.

Shafts

Heat-treated steel, mounted on ball bearings.

Housing Die cast aluminum.

Lubrication Permanent lubrication.

Noise Level

All units tested for objectionable noise level.

Rotation Direction

Right hand (opposite to input).

Left hand (same as input).

Specifications are identical.

T-Drives

Right or left hand units available, with through shaft.

COMPLETE ASSEMBLY

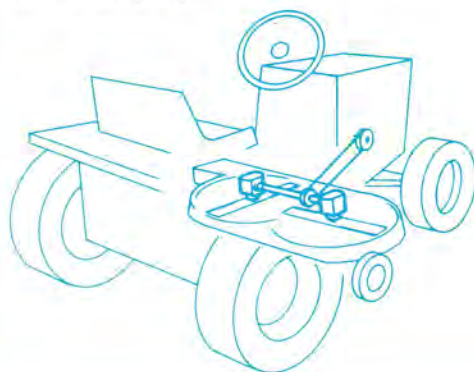
Cross-Shaft Length To customer specification.

Cross-Shaft Diameter $\frac{7}{8}$ "

Pulley Pulley available, for use with "B" belt.

NOTE

Recommend No. 5103-81 "Crescent" Tru-Arc Retaining Ring in Cross Shaft to contain Couplings.

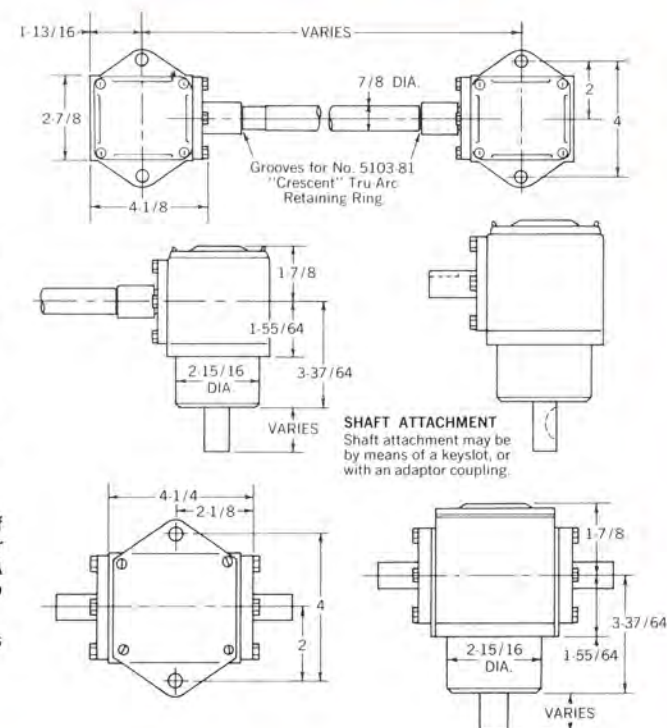


PEERLESS RIGHT ANGLE DRIVES, HEADS, AND T DRIVES

FOR DRIVING MULTIPLE MOWER BLADES, FOR STEERING DEVICES, SNOW BLOWERS, AND OTHER APPLICATIONS.
APPROXIMATE WEIGHT 6 POUNDS PER UNIT



dimensional data



applications

MULTIPLE MOWER BLADE DRIVE — Peerless right angle drive used in combination with T-Drive forms a compact assembly for driving 3 synchronized blades on riding mowers. Assembly is mounted on mower housing, and connected by pulley and belt to the engine crankshaft.

TWO STAGE SNOWBLOWER — The T-Drive provides a means of propelling both the auger and the blower with an uncomplicated belt arrangement, for integral or tractor driven units. The engine drives the input shaft of the T-Drive which in turn drives the auger and blower at different speeds.

"IN LINE" POWER DRIVE — By changing the typical relation of engine to axle, and positioning it with the PTO forward, a tractor design with a minimum turning radius is made possible. A single Right Angle Head can then be used to transmit power to the rear wheels through a Peerless transaxle.

INDUSTRIAL APPLICATIONS — Used in many applications which require 90° change of motion.

Service support is our foremost responsibility.

This has always been our policy and now, more than ever, we feel this is important to our continued growth. Tecumseh's efficient service network is continually stocked with computer selected in depth parts and manned by factory trained engine service mechanics. Over 150 internal factory personnel are exclusively committed to service support. Factory representatives are located in regional territories. Each region is further supported by the finest Central Warehouse Distributors in the industry. Parts stocking service distributors supply all trade areas. Servicing dealers, over 15,000 strong, are conveniently located throughout the USA and Canada plus thousands more in our worldwide service organization. Factory service coordinators handle direct telephone communications and mail inquiries, their function is unique in our industry.

PEERLESS® GEAR

Reproduction of 1980 catalog