

PEERLESS® GEAR

Your Transmission Solution

Made in the USA Since 1945

ISO Certified • Quality 9001:2015 • Environmental 14001:2015

PRODUCT SELECTION GUIDE

The Trusted Name in Commercial, Industrial, Residential Drives, and Powertrains

In 2023 Peerless Gear celebrates 78-Years in business producing drive train products for the global outdoor power equipment market. We manufacture our products in the USA and supply product to Commercial, Rental and Residential equipment around the world.

We support our products through a vast global dealers/distributor network. We look forward to earning your business.



PEERLESS GEAR

1555 S. Jackson St. • Salem, IN 47167 USA

US Customer Support
US Engineering
US Sales

812-675-GEAR (4327)
812-883-7960
812-883-7979

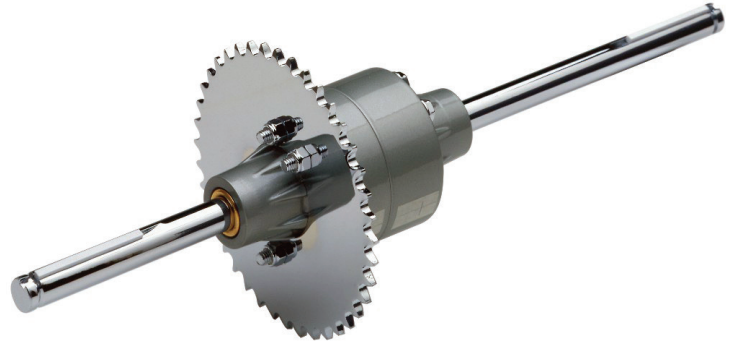
International Sales & Engineering
0044 7889 668531

For North America Sales Contact
oemsales.peerless@peerlessgear.com

For International Sales Contact
dean.swansborough@peerlessgear.com

peerlessgear.com

100 Series Differentials



Features & Benefits

PEERLESS 100 Series Differentials provide ultimate performance, durability, and ease of operation for residential or commercial applications. Available with 3/4" or 1" diameter axle shafts. Peerless Differentials are ultra-quiet and will provide customers with superior performance and can be used with a Peerless 700 Series transmission, a gas engine, or an electric motor.

- **Housing** – Die-cast aluminum housings offer outstanding heat dissipation and durability
- **Axle Shafts** – 3/4" (19.05 mm) and 1" (25.4 mm) diameter with key slots; optional axle lengths and ends available
- **Differential** – Automotive-type sintered metal or optional steel cut bevel gears provide smooth, long lasting performance
- **Bushings** – Axle shafts rotate on bronze or oil impregnated bushings; needle bearings and seals are available as an option on 3/4" (19.05 mm) diameter axles
- **High Carbon Steel Bolts** – Holds housing assembly together and provides mounting for pulley vs pulley or sprocket; includes locknuts (4-bolt standard, 6-bolt optional)
- **Stamped Steel Sprockets** – Standard 40,45,54 or 60 tooth sprockets for number 40 and 41 chain; can be purchased separate from differential
- **Applications** – rear engine riders, go-karts, seeders/spreaders, electric vehicles, floor sweeper, power wheelbarrow, and pedicab trikes

Technical Specs

Output Torque

150 ft. lbs. (203.4 N-m)

Axle

3/4" (19.05 mm)

1" (25.4 mm)

Tire Diameter

18" (457.2 mm)

20" (508.0 mm)

Weight on Differential

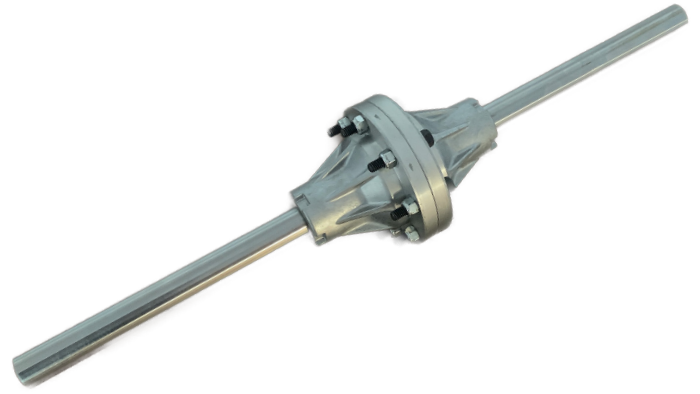
400 lbs. (181.5 kg) –

3/4" (19.05 mm)

600 lbs. (272.3 kg) –

1" (25.4 mm)

110 Series Differential Axle



Features & Benefits

PEERLESS 110 Series Differentials provide ultimate performance, durability, and ease of operation for residential or commercial applications. Available with 1-inch or 25 mm diameter axle shafts. Peerless Differentials are ultra-quiet and will provide customers with superior performance and can be used with a Peerless 700 Series transmission, a gas engine, or an electric motor.

- **Housing** – Die-cast aluminum housings offer outstanding heat dissipation and durability
- **Axle Shafts** – 1" or 25 mm diameter with key slots; optional axle lengths and ends available
- **Differential** – Automotive-type sintered metal or optional steel cut bevel gears provide smooth, long lasting performance
- **Bushings** – Axle shafts rotate on bronze or oil impregnated bushings
- **High Carbon Steel Bolts** – Holds housing assembly together and provides mounting for sprocket or pulley; includes 8 bolts with locknuts
- **Applications** – rear engine riders, go-karts, seeders/spreaders, electric vehicles, floor sweeper, power wheelbarrow, and pedicab trikes

Technical Specs

Output Torque

225 ft. lbs. (305 N-m)

Axle

1" (25.4 mm)

25 mm

Tire Diameter

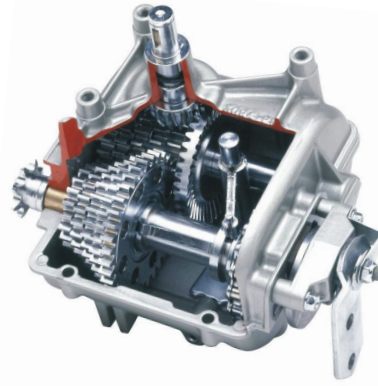
18" (457.2 mm)

20" (508.0 mm)

Weight on Differential

600 lbs. (272.3kg) – 1" or 25 mm axles

700 Series Transmissions



Features & Benefits

PEERLESS 700 Series Transmissions provide ultimate performance, durability, and ease of operation for residential or commercial applications. The transmission is available with optional output shafts configured for splined connector shafts/couplings and sprocket/service brake.

- **Housing** – Die-cast aluminum housings offer outstanding heat dissipation and durability
- **Gears** – Sintered metal or optional steel cut
- **Shifter** – 2 shift keys or optional 4 shift keys (heavy duty)
- **Output** – 9 tooth splines or 36 tooth serrations
- **Gear Selection** – Up to 5 forward and 1 reverse
- **Input Shaft** – 5/8" diameter
- **Brake** – Can be used as a parking brake
NOTE: Brake is effective only when the power source is not driving the input shaft of transmission/transaxle
CAUTION: Brake requires periodic maintenance and adjustment to assure safe operation of equipment
- **Available Gear Ratios** – Forward 9.2:1, 7.0:1, 6.4:1, 5.3:1, 4.5:1, 3.0:1, 2.4:1, 1.8:1 and Reverse 4.2:1 or 6.0:1
- **Sprockets** – 8, 10, 12, 15, and 16 teeth available
- **Applications** – Commercial wide-area walk mowers, rear engine riders, go-karts, and sod machines

Technical Specs

Output torque

20 ft. lbs. (27.1 N-m)

Net Weight

18 lbs. (8.2 kg)

Lubrication – Specialty Formulated Grease

12 oz (.35 liters)

18 oz (.53 liters) optional

Output Shaft Support

Bushings or optional ball bearings

Input Shaft Support

Needle bearings with seal

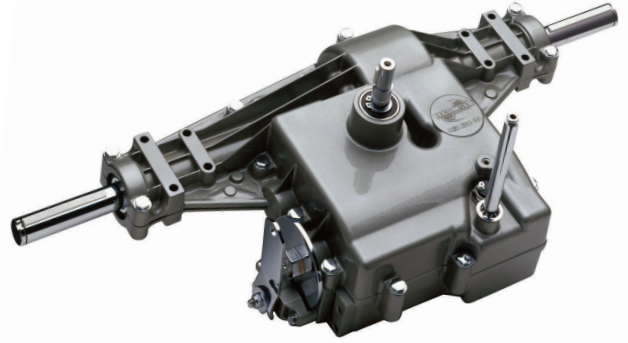
Neutral Switch

Optional

Output Sprocket or Brake

Disk vs disc brake or sprocket
(mounts on right or left)

820 Series Transaxles



Features & Benefits

PEERLESS 820 Series Transaxles are the best in class. They provide ultimate performance, durability, and ease of operation for your garden tractor needs.

- **Housing** – Die-cast aluminum housings offer outstanding heat dissipation and durability. Housings are sealed to prevent the entry of water and dirt, extending component life.
- **Lubrication** – Specially formulated grease
- **Differential** – Automotive-type steel bevel gears provide smooth and long lasting performance
- **Bearings** – Ball bearings on axles and input shafts. Needle bearings on all other shafts
- **Gears** – All gears are cut steel and heat-treated
- **Gear Ratios** – Forward: 92.9:1, 62.9:1, 47.6:1, 43.3:1, 36.3:1, 30.6:1, 23.9:1, 20.4:1, 16.0:1, 13.6:1, 12.5:1; Reverse: 40.8:1 & 28.5:1
- **Applications** – Air craft tugs, garden tractors, lawn tractors, yard tractors, utility vehicles, small fork lifts, power wheel barrows, and power wagons
- **Brake** – Can be used as a parking brake
NOTE: Brake is effective only when the power source is not driving the input shaft of transmission/transaxle
CAUTION: Brake requires periodic maintenance and adjustment to assure safe operation of equipment

Technical Specs

Output torque

450 ft. lbs. (610 N-m)

Maximum Forward Speed

6

Axle Size

1" (25.4 mm)

Maximum Input Speed

2,000 RPM

Maximum Tire Diameter

23" (584 mm)

Weight on Tires

600 lbs. (272 kg)

Input Shaft

Heavy duty ball and thrust bearings

Mounting - 4 Points

Axle mounts on both sides of transaxle

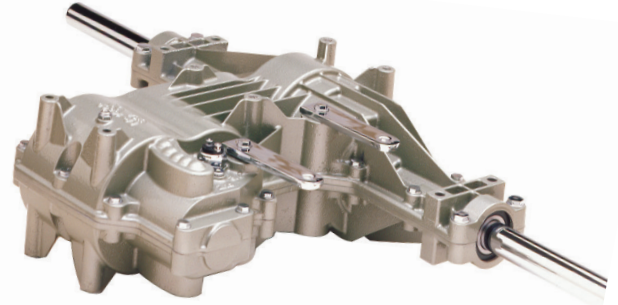
Neutral Switch

Optional

Net Weight

45 lbs. (20.4kg)

855 Series Transaxles



Features & Benefits

PEERLESS 855 Series Transaxles are the best in class. The 855 Series units will accept a Comet 30 Series CVT for additional speed control convenience.

- **Housing** – Die-cast aluminum housings offer outstanding heat dissipation and durability; Housings are sealed to prevent the entry of water and dirt, extending component life
- **Lubrication** – Specially formulated grease
- **Axle Shafts** – 1" (25.4 mm) with key slots
- **Differential** – Automotive-type steel bevel gears provide smooth, long lasting performance
- **Optional Differential Lock** – Provides traction necessary for loose dirt or gravel surfaces
- **Bearings** – Ball bearings on axles, needle bearings on input and all other shafts
- **Gears** – All gears are cut steel and heat-treated
- **Gear Ratios** – Forward: 24.78:1, 18.75:1, 17.08:1, 14.29:1, 12.06:1, 9.44:1, 8.04:1, 6.31:1, 5.36:1, 4.93:1 and Reverse: 61.26:1
- **Brake** – Can be used as a parking brake
NOTE: Brake is effective only when the power source is not driving the input shaft of transmission/transaxle
CAUTION: Brake requires periodic maintenance and adjustment to assure safe operation of equipment
- **Applications** – Air craft tug, ride on seeders, utility vehicles, fun carts and go karts

Technical Specs

Output torque

450 ft. lbs. (610 N-m)

Maximum Forward Speeds

3

Axle Size

1" (25.4 mm)

Maximum Input Speed

2,000 RPM

Maximum Tire Diameter

23" (584 mm)

Weight on Tires

600 lbs. (272 kg)

Input Shaft

Horizontal

Mounting - 8 Points

Axle and housing mounts

Differential

Steel cut bevel gear (optional locking differential assembly)

Neutral Switch

Optional

Shift Keys

2- or 4-shift keys

For more information about Comet® Clutches or Torque converters go to <https://www.cometclutches.com>

1000/1050 Series Right Angle and T-Drive Gearboxes



Features & Benefits

PEERLESS 1000/1050 Series Right Angle and T-Drives are ideal for mower deck drives requiring the mower's blade to be mounted directly to the gearbox output shaft. Peerless 1050 Cast Iron Gearboxes are available for heavy-duty and high impact applications.

- **Housing** – 1000 Series – Die Cast Aluminum
1050 Series – Cast Iron
- **Shafts** – 7/8" (22.2 mm) diameter
Customer specific shaft designs available
- **Bearings** – All shafts mounted on ball bearings
- **Gears** – Heavy duty and heat treated cut steel
- **Output Rotation** – CW in = CW out
CW in = CCW out
- **Lubrication** – EP-90 gear oil
- **Couplings** – Available to couple units together for deck drive
- **Connector Shafts** – Available to couple units together for deck drive
- **Gear Ratios** – 1.2:1, 1:1, and .833:1
- **Applications** – Mower cutter box drive, angle power transfer, heavy duty steering box, and concrete saws

Note: Specifications subject to change without notice.

Technical Specs

Recommended HP Through Gearbox

1000 Series Aluminum Housing 10 HP

1050 Series Cast Iron Housing 13 HP

Maximum Input Speed

3,600 RPM

Maximum Static Torque

100 ft. lbs. (135.6 N-m)

Weight on Tires

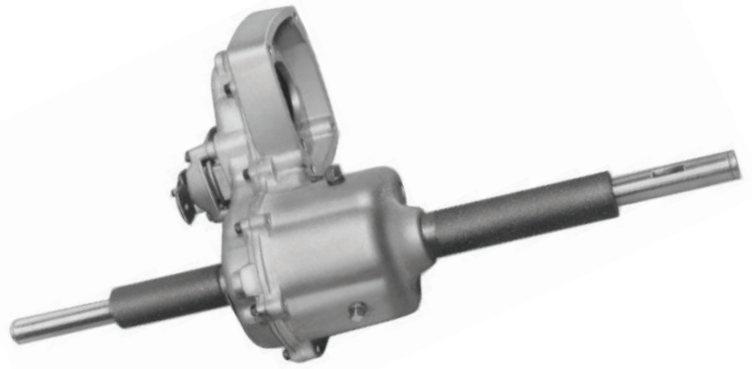
1000 Series 6 lbs (2.7 kg)

1050 Series 9 lbs (4.1 kg)

Options

Couplings with internal splines, connector shafts, various shaft ends and types, and customer requested shafts

1300 Series Hydrostatic Final Drives



Features & Benefits

PEERLESS 1300 Hydrostatic Final Drives, when coupled with an Eaton Model 11 Hydrostatic Transmission, can provide up to 400 ft. lbs. (542 N-m) of axle output torque. For applications with lower output torque requirements, the Peerless 1300 Series can be coupled to the Eaton Model 7 Hydrostatic Transmission.

- **Final Drive** – Housing is made from reinforced die-cast aluminum with cast iron axle supports; axles shafts rotate on oil impregnated bronze bushings
- **Gears** – All steel cut gears, heat-treated
- **Axle Shafts** – 1" (25.4 mm) with key slots
- **Differential** – Automotive-type steel bevel gears provide smooth, long lasting performance
- **Oil Bath Lubrication** – Gear case can be used as reservoir for hydrostatic system; Eaton requires premium hydraulic fluid having viscosity equivalent to SAE 20W30
- **Applications** – Air craft tugs, garden tractors, mini tractors, stump grinders, and small fork lifts
- **Available 1310 Gear Ratio:**
12.1:1 uses Pinion Gear #4237P1 from Peerless Gear
16.2:1 uses Pinion Gear #4274P1 from Peerless Gear
- **Available 1300 Gear Ratio:**
19.7:1 uses Pinion Gear #42236 from Eaton
22.2:1 uses Pinion Gear #40511 from Eaton

Technical Specs

Output Torque

400 ft. lbs. (542 N-m)

Axle Size

1" (25.4 mm)

Max. Weight on Transaxle

600 lbs. (272 kg)

Max. Input Speed

3,600 RPM

Max. Tire Diameter

23" (584 mm)

**Peerless Gasket
for Motor Mounting**

P/N 788046 (1300)

P/N 788050 (1310)

Parking Brake

Disc brake available

Net Weight

30 lbs. (14 kg)

To purchase Eaton model 7 or 11 hydrostatic transmissions, visit hydraulics.eaton.com/products/trans_light_duty.htm.

2100 Series Hydrostatic Transmissions



Features & Benefits

PEERLESS 2100 Series Hydrostatic Transmissions are engineered with either right-hand or left-hand controls.

- **Housing** – Sealed die-cast aluminum housing offers outstanding heat dissipation and durability for longer life
- **Lubrication** – Mobil 424 oil provides superior lubrication and performance
- **Output Shaft** – Transmission comes standard with a 3/4" (19.05 mm) diameter shaft with woodruff key; Optional shafts diameters and configurations available upon request
- **Bearings** – All shafts are mounted on needle or ball bearings for longer life
- **Neutral Position** – Transmission neutral is pre-adjusted at factory
- **Transmission Controls** – Available with friction pack or Return To Neutral system; Extremely low effort foot pedal or hand controls provide operators more comfortable vehicle control; Right-hand or left-hand controls available
- **Applications** – Snow blowers, walk-behind mowers, zero turn machines and concrete saws

Technical Specs

Output Torque

85 in. lbs. (9.6 N-m)

Hydrostatic Transmission Reservoir

Bottle or hose with breather
2-5 psi (.14-.35 bar)

Input Speeds

2,300 RPM (max.)
1,800 RPM (min.)

Net Weight

16 lbs. (7.3 kg)

Lubrication

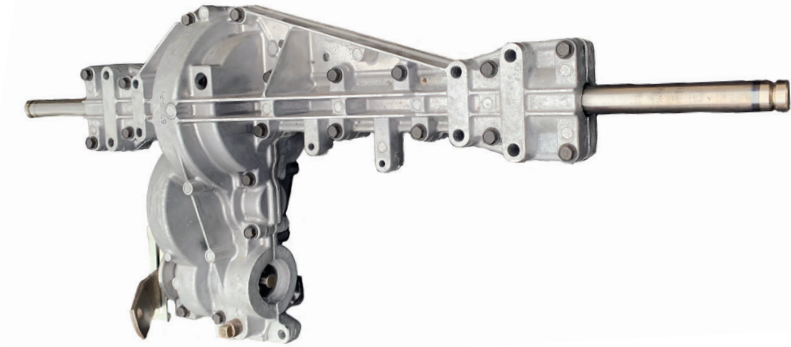
Mobil-424 oil

Controls

Friction or return to neutral

NOTE: Specifications are subject to change without notice.

2200 Series Final Drive



Features & Benefits

PEERLESS 2200 Series Final Drive provides ultimate performance, durability, and ease of operation for residential or commercial applications. Designed to be used with a hydraulic or electric motor to drive the final drive.

- **Housing** – Die-cast aluminum housings offer outstanding heat dissipation and durability
- **Differential** – Automotive-type sintered metal bevel gears
- **Axle Shafts** – 3/4" (19.05 mm) with key slots; Optional axle lengths and ends available
- **Needle Bearings** – on all shafts for longer life
- **Brake** – Can be used as a parking brake
NOTE: Brake is effective only when the power source is not driving the input shaft of transmission/transaxle
CAUTION: Brake requires periodic maintenance and adjustment to assure safe operation of equipment
- **Gear Ratios** – 22.091:1 and 20.014:1
- **Applications** – Riding mowers, walk behind mowers, seeder/spreaders, floor sweepers, stable cleaners, power wheelbarrows and powered brushes

Technical Specs

Output Torque

165 ft. lbs. (224 N-m)

Maximum Tire Diameter

20" (508 mm)

Lubrication

EP-90 gear lube

Brake – Optional

Adjustable or non-adjustable

Optional Drive Systems

Hydraulic or 48V DC

Axle Diameter

3/4" (19.05 mm)

Weight on Tires

525 lbs. (238 kg)

2600 Series Final Drives



Features & Benefits

PEERLESS 2600 Series Final Drives can be coupled with an electric motor or hydraulic drive, providing up to 1,200 ft. lbs. (1627 N-m) of axle torque. For optimum performance, an optional four pinion, automotive-type differential, differential lock, and high/low range are available for the 2600 Series final drives.

- **Housing** – Final drive is made from reinforced die-cast aluminum with cast iron axle supports; Peerless 2600 Series final drives are available with Peerless 2650 Series axles or 2675 Series forged axles
- **Gears** – All steel cut gears, heat-treated for extra strength, increased gear reduction for E-drives
- **Gear Ratios** – High: 24.8:1
– Low: 40.0:1
– Single-speed Low: 52.24:1
- **Lubrication** – Oil bath lubrication; gear case can be used as reservoir for hydraulic system
- **Differential** – Automotive-type steel bevel gears
- **Locking Differential** – Optional
- **Parking Brake** – Suitable for band or disc brake
- **Forged Axle Shafts** – Sold and shipped separately in a cast iron housing assembly
- **Applications**
 - Air craft tugs and support equipment
 - General utility vehicles
 - 2-wheel drive tractors/mini tractors
 - 4-wheel drive tractors/mini tractors
 - Small fork lifts
 - Garden tractors

Technical Specs

Output Torque

1,200 ft. lbs. (1,627 N-m)

Available Axle Sizes

1.187" (30.1 mm) Heat treated

1.570" (40 mm) Forged steel

(includes hub with studs)

Maximum Weight on Transaxle

1,800 lbs. (816.5 kg)

1.187" (30.1 mm axles)

2,200 lbs. (997.9 kg)

1.570" (40 mm axles)

Maximum Input Speed

3,600 RPM

Maximum Tire Diameter

29" (737 mm)

Wheel Weight Total

600 lbs. (272 kg)

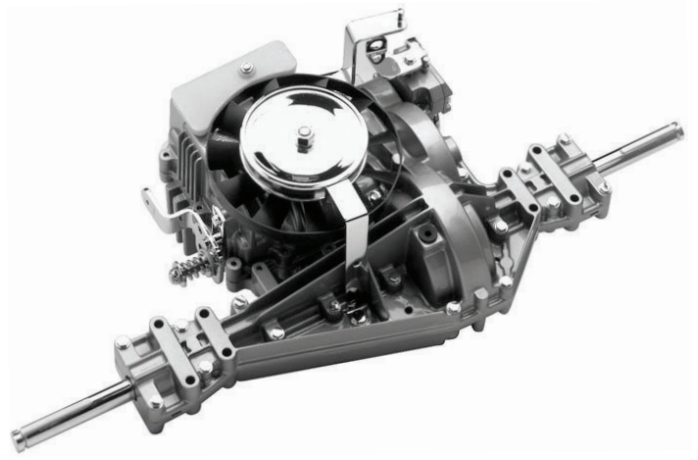
Weight Box to Offset Front Mount Implements

500 lbs. (227 kg)

Parking Brake Shaft

1" (25.4 mm) diameter shaft
with key slot

LTH Series Hydrostatic Transaxles



Features & Benefits

PEERLESS LTH Series Hydrostatic Transaxles' patented modular design provides superior lubrication by allowing specially formulated gear oil to be used in the final drive while the hydrostatic transmission uses hydraulic oil in separate reservoir to reduce particulate contamination. For ease of installation, LTH-2000 Series transaxles are available with either left-hand or right-hand controls.

- **Housing** – Die-cast aluminum housings offer outstanding heat dissipation and durability.
- **Lubrication** – Specially formulated gear oil in the final drive and Mobil 424 oil in the hydrostatic transmission provide superior lubrication and performance
- **Axle Size** – 3/4" (19.05 mm)
- **Needle Bearings** – On all shafts for longer life
- **Optional Disconnect** – Allows vehicle to be moved by hand
- **Service** – Transmission is non-serviceable; final drive is completely serviceable
- **Brake** – Can be used as a parking brake
NOTE: Brake is effective only when the power source is not driving the input shaft of transmission/transaxle
CAUTION: Brake requires periodic maintenance and adjustment to assure safe operation of equipment
- **Gear Ratios** – 22.091:1, 20.014:1, 16.691:1, 15.860:1
- **Controls** – Available with adjustable friction pack system for hand control, or optional return to neutral system is available for foot control version
- **Applications** – Lawn equipment, utility vehicles, power wheelbarrows, agricultural machines

Technical Specs

Hydrostatic Transmission Displacement
.623 in³/rev (10.2 c/rev)

Input Speeds (RPM)
2,300 max., 1,800 min.

Maximum Tire Diameters
23"* (584 mm)
165 lb. ft. (224 Nm)
*Cheater

20"(508 mm)
150lb.ft. (204 Nm)

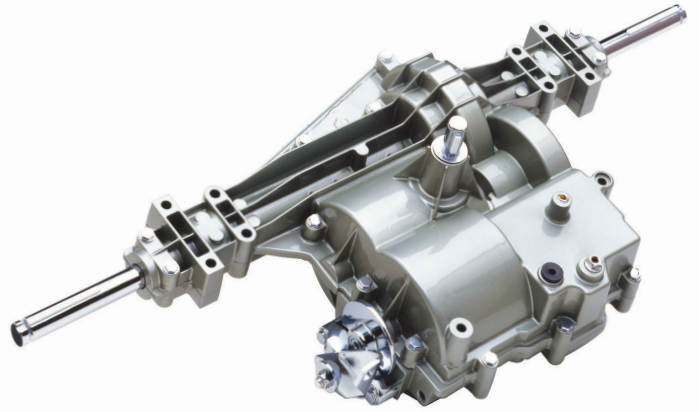
18"(457 mm)
125lb.ft. (170 Nm)
119lb. ft. (161Nm)

Weight on Tires
525 lbs (238 kg)

Weight
36 lbs. (16 kg)

NOTE: Specifications are subject to change without notice.

MST Series Transaxles



Features & Benefits

PEERLESS MST Series Manual Shift Transaxles are best in class and available with up to six forward speeds and one reverse. They lead the industry in ultimate performance, durability, and ease of operation for all residential or commercial applications.

- **Housing** – Die-cast aluminum housings offer outstanding heat dissipation and durability. Housings are sealed to prevent the entry of water and dirt, extending the life of components.
- **Lubrication** – EP-90 gear lube
- **Axle Shafts** – 3/4" (19.05 mm) with key slots
- **Differential** – Automotive-type sintered metal bevel gears provide smooth, long lasting performance
- **Bushings** – All shafts rotate on oil impregnated bronze bushings
- **Input Shaft** – Needle bearing with separate shaft seal
- **Axle Bearings** – Housing surface; optional needle or ball bearing
- **Brake** – Can be used as a parking brake
NOTE: Brake is effective only when the power source is not driving the input shaft of transmission/transaxle
CAUTION: Brake requires periodic maintenance and adjustment to assure safe operation of equipment
- **Gear Ratios** – Forward: 68.559:1, 60.249:1, 47.464:1, 34.279:1, 30.918:1, 27.932:1, 22.853:1, 20.676:1, 15.235:1, 13.711:1 and Reverse: 47.464:1
- **Applications** – Lawn tractors, commercial wide-area walk mowers, ride-on seeders, and electric vehicles

Technical Specs

Output Torque

225 ft. lbs. (305 N-m)

Maximum Forward Speeds

6

Axle

3/4" (19.05 mm)

Maximum Input Speed

2,000 RPM

Maximum Tire Diameter

20" (508 mm)

Weight on Tires

525 lbs (238 kg)

Neutral Switch

Optional

Input Type

Pulley and belt

Weight

38 lbs. (17.2 kg)

NOTE: Specifications are subject to change without notice.